

Meet Freely

MEETINGS, EVENTS, & CONVENTIONS

INFORMATIONAL GUIDE

HECH HETCHY RESERVOIR
YOSEMITE NATIONAL PARK

CONTENTS

Welcome and Overview	1
Why Use a Visitors Bureau	2
Travel & Transportation	4
Meaningful & Responsible Travel	5
Weddings & Elopements	6
Venues with Lodging	7
Unique Event Facilities	26
Services	38
Team Building & Activities	46



JAMESTOWN



WANDERING WORKS *Wonders*

Meet up with amazing and step into Tuolumne County, and immerse yourself in a single destination that offers three regions for naturally productive meetings and incredible events. Experience iconic and uncrowded Yosemite National Park, make golden discoveries in California Gold Country, or explore the exciting High Sierra.

Tuolumne County is very close, just 2 1/2 hours from the San Francisco Bay Area and 2 hours from Sacramento, and yet you and your group will feel as though they're a world away. With unique indoor and outdoor venues, great places to stay, and exciting activities, Tuolumne County is close, affordable, and ready to make your gathering distinctly memorable.

Call our office for assistance in creating your next event: (800) 446-1333



Kennedy Meadows

VISIT TUOLUMNE COUNTY

Always Here to Help

Any question, any need, Visit Tuolumne County is your single point of contact. This free service is primed with local knowledge and can help you streamline the process, provide team-building itineraries, suggest great restaurants and more.

Call our office for assistance in creating your next event: (800) 446-1333 or visit visittuolumne.com/groups-and-meetings.

Check out Visit Tuolumne County on



Visit us at the Visitors Center:
193 S. Washington St.
Sonora, CA 95370



Enjoy a meal on us!

Book your first business or corporate meeting through Visit Tuolumne County and receive a sponsored breakfast or lunch:

- **\$500 for 10-24 room nights**
- **\$750 for 25-49 room nights**
- **\$1,000 for 50-100 room nights**

Contact us for details on how to receive the sponsorship incentive.



Natural Beauty Well Within Reach

By car or by air, you won't have far to go to reach Tuolumne County. The closest airports are San Francisco, Oakland, Sacramento and Fresno with a 2 to 3 hour drive to follow. Road conditions are generally favorable, however during the winter months drivers may be required to carry tire chains and install them on their tires to access select roads, particularly those in Yosemite National Park.



Driving Distance

FROM SACRAMENTO: 95 MILES, 1 HOUR AND 55 MINUTES

FROM DUBLIN/PLEASANTON: 98 MILES, 1 HOUR AND 55 MINUTES

FROM OAKLAND: 124 MILES, 2 HOURS AND 15 MINUTES

FROM SAN JOSE: 129 MILES, 2 HOURS AND 30 MINUTES

FROM SAN FRANCISCO: 132 MILES, 2 HOURS AND 30 MINUTES

FROM FRESNO: 148 MILES, 3 HOURS AND 20 MINUTES

Public Transportation

Travel to Yosemite is especially convenient with Yosemite Area Regional Transit System (YARTS). They offer daily round-trip bus service from several Tuolumne County locations to Yosemite Valley from May through September.

YARTS service from Tuolumne County to the visitor center in Yosemite Valley includes your park entrance fee and features breathtaking scenery and knowledgeable drivers. **yarts.com**

Mother Lode Adventures Charter and Tours offer customized tours as well as transportation to and from major airports. Ride share apps also have limited service in the area. **mlacharters.com**

Gold Rush Tour Company provides private and customizable itineraries and transportation for your group with door-to-door service in Tuolumne County. Contact them with places you would like to visit, and they will help you build your tour. **goldrushtourcompany.com**



MEANINGFUL TRAVEL

Keeping Tuolumne County Safe & Beautiful

Responsible travel involves preserving our natural environment, making sure to leave no trace by staying on the trails and packing out your trash. It involves understanding the causes for wildfires and how to help prevent them. It also involves being respectful of the region and others staying or living in the area.



Stay on trails



Pack out what you pack in



Be wildfire safe



Be respectful

Meaningful Travel

Many opportunities exist in Tuolumne County for your group to have a meaningful experience, whether it is participating in trail work, tree plantings, river clean-ups, or getting immersed in local Native America culture, there is something available to enhance your experience and make it memorable and fulfilling. Find out more:

Visit [Tuolumne.com/meaningful-travel](https://www.tuolumne.com/meaningful-travel)



TUOLUMNE GROVE
OF GIANT SEQUOIAS,
YOSEMITE NATIONAL PARK

WEDDINGS

Your Forever Starts Here

PLAN THE PERFECT WEDDING IN TUOLUMNE COUNTY

Natural beauty and historic charm make Tuolumne County a dream destination for your special day. Opt for an 1860's Victorian Hotel, a secluded garden setting at a charming B&B or embrace the natural beauty and exquisite service at one of our mountain resorts. There are also traditional wedding and banquet facilities that can accommodate up to 250 guests. There are a lot of ways to make memorable moments in Tuolumne County.



Venues

WITH LODGING



Evergreen Lodge

BEST WESTERN SONORA OAKS HOTEL AND CONFERENCE CENTER

SONORA

Experience the natural beauty of the Sonora area, while staying at this charming property near Yosemite and local wineries. All guests can enjoy a complimentary full, hot breakfast, free parking, a seasonal outdoor heated pool, exercise facility and WiFi throughout the property. The hotel can accommodate up to 382 overnight guests in 100 rooms.

The banquet and conference facilities are great for wedding receptions, family reunions, celebrations of life, baby showers, and corporate trainings. Additional meeting facilities are available and are perfect for more intimate events such as smaller family gatherings, depositions, and small business meetings.



Meeting Spaces



Oak Glen Conference Room

150 banquet rounds

150 theater style

60 classroom style

Executive Boardroom

14

The BBQ Patio

25

Contact

Kathy Haki

(209) 533-4400

sales@bwsonoraoaks.com

bestwestern.com

THE HOTEL AT BLACK OAK CASINO RESORT

TUOLUMNE

Featuring 148 spacious, smoke-free rooms and suites, THE HOTEL is the perfect luxury escape. Ideally located near Yosemite National Park and historic Gold Country, rooms feature luxurious bedding, WiFi, complimentary Keurig coffee brewer, mini refrigerator and microwave. There are also family fun activities such as bowling and an arcade on-site along with a golf course 20 minutes from the resort. Round out your stay by visiting the casino for casual and fine dining at one of the five restaurants, a nightcap at one of the two bars, gaming and endless entertainment for all ages.

With event space ranging from 8 to 590 people, there is an option for every kind of meeting need, from large corporate events and weddings to more intimate gatherings.



Meeting Spaces

Meeting Room	L x W	Sq. Ft.	72" Rounds	Theater	U-Shape	Conference	Classroom	Reception	8 X 10 Booth	8 X 10 Booth
Executive Boardroom	-	700	-	-	-	14	-	30	-	-
Dogwood	31' x 27'	860	50	75	24	26	40	86	-	-
Redbud	31' x 27'	860	50	75	24	26	40	86	10	-
Dogwood/Redbud	62' x 27'	1720	120	150	66	54	80	165	-	8
Cedar	31' x 27'	860	50	75	24	26	40	86	-	-
Manzanita	31' x 27'	860	50	75	24	26	40	86	10	-
Cedar/Manzanita	62' x 27'	1720	120	150	62	54	80	165	25	8
Four Winds	62' x 65'	3900	250	370	-	-	186	405	12	20
Prefunction Room	31' x 65'	2000	120	182	-	-	90	195	32	9
Four Winds & Prefunction	93' x 65'	5900	360	475	-	-	-	590	-	26

Contact

Cissy Frazier, Sales Coordinator
(209) 928-9522
cfrazier@blackoakcasino.com
blackoakcasino.com

COLUMBIA STATE HISTORIC PARK

For your next gathering, immerse your group in authentic California's Gold Rush history in Columbia State Historic Park. Spend free time strolling along wooden sidewalks, riding on an authentic stagecoach, panning for gold, and conversing with knowledgeable and friendly townspeople dressed in period attire. Restaurants, saloons, working blacksmith shop, old-fashioned bowling alley, theatre and shops provide the town's genuine ambiance. There are several meeting and gathering spaces throughout the park. The engaging experience doesn't end at the end of the day; two historic inns and three cabins allow your group of up to 68 guests to stay right in the heart of the working Gold Rush town.



Photo credits: Preethi Chandrasekhar



Meeting Spaces



Fallon Rose Garden

50

Burns Cottage Garden

100

Gazebo

50

Mocine Barn Area

25

School House Grounds

25 vehicles (outside grounds only)

Contact

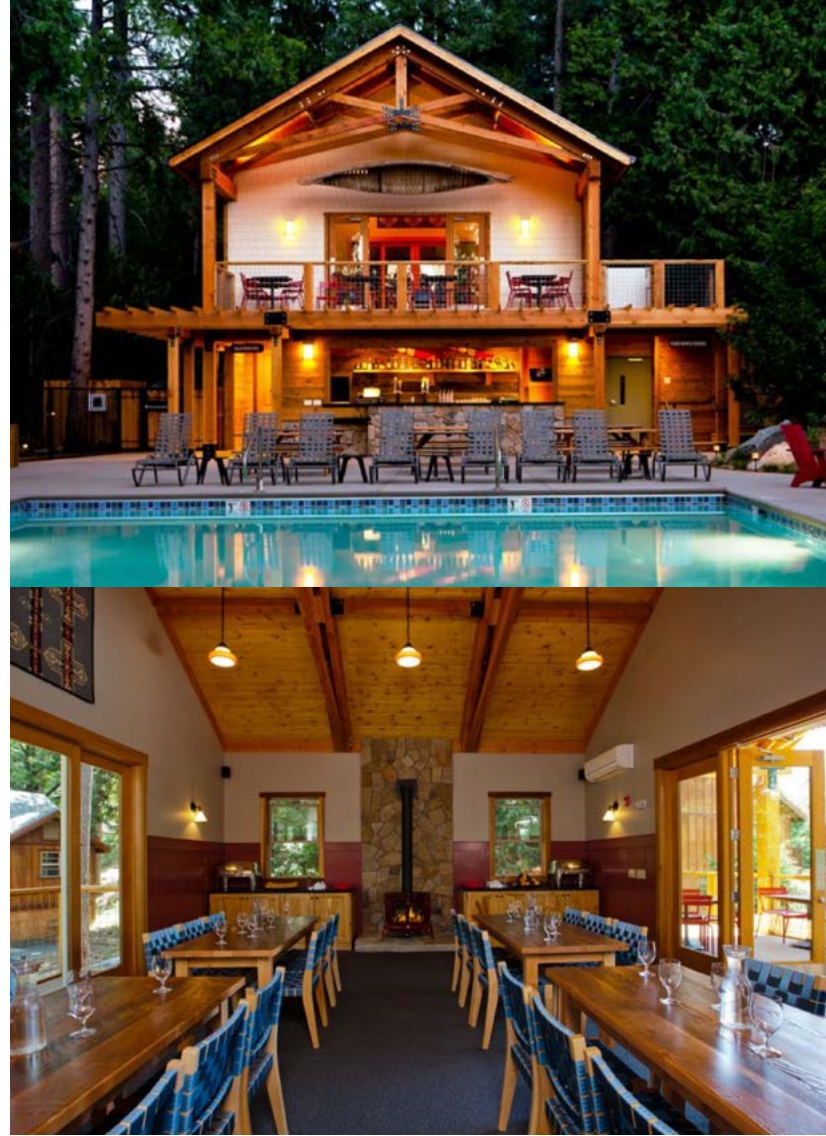
All sites must be reserved through the State of California Special Event Process. Contact: Lisa Domser
lisa.domser@parks.ca.gov
parks.ca.gov/columbia

EVERGREEN LODGE

GROVELAND

Evergreen Lodge is a classic mountain resort that is a Frommer's Favorite and highly recommended by Fodor's California. The historic lodge offers 88 cozy cabins in the woods, a full-service restaurant and tavern, recreation center, meeting/event hall, general store, pool, guided outdoor recreation trips, nightly activities and is only 8 miles from the entrance of Yosemite National Park.

Groups at Evergreen can meet in various indoor spaces or outdoors in the company of towering pines. Facilities can accommodate planning sessions, sales meetings and conventions, retreats, outings, holiday parties, association gatherings and more.



Meeting Spaces

Room Name	Theater	Classroom	Banquet	Reception
Tuolumne Hall	130	110	100	100
Board Room	20	15	18	25
Cedar Room	40	18	36	40
Outdoor Plaza	200	225	-	-
Coyote Hill (outdoor)	200	150	200	225
Wapama Grove	200	50	-	100

**Numbers not maximum capacities.*

Contact

Event Sales
(209) 379-2373 x 1516
groups@rushcreeklodge.com
evergreenlodge.com

GROVELAND HOTEL

GROVELAND

Near Yosemite National Park, the Groveland Hotel's outdoor courtyard provides ambiance and casual elegance for private parties and special events. Each of the 18 unique rooms includes free WiFi, telephone/voicemail and complimentary coffee and tea.

Provisions Restaurant situated in the hotel's 1849 Adobe building carries several craft beers and ciders on tap, a wide selection of local wines, plus has a menu of elegant freshly-made comfort food.



Meeting Spaces

Outdoor Courtyard

Up to 98

Contact

Manager

(209) 962-4000

stay@innsofgroveland.com

groveland.com

HOTEL LUMBERJACK

SONORA

Hotel Lumberjack is located at the center of historic Sonora, California, and is a newly envisaged Americana Motel experience. Your group will enjoy a central location with shopping, dining, wine, beer, and cider tasting and all of the outdoor recreation imaginable within a short distance. Guest rooms have been thoughtfully designed with working niches, oversized beds and large walk-in showers with eco-friendly amenities throughout. 34 guest rooms can accommodate 104 overnight guests. Meeting space is located in Hotel Lumberjack's sister property, The Sonora Inn located directly across the street.



Meeting Spaces

Located at sister property, The Sonora Inn across the street.

Rose Room

Theater up to 80, Classroom/banquet up to 45

Breakfast Room

Theater up to 60, Classroom/banquet up to 43

Rooftop Pool Deck

Outdoor up to 60

Contact

Jeff Michels, Owner

(209) 532-2400

jeff@sierranevadahospitality.com

hotellumberjack.com

LAZY Z RESORT

TWAIN HARTE

Minutes away from the town of Twain Harte, the Lazy Z Resort invites you to experience a true mountain retreat with breathtaking surroundings. Stretch out and be inspired at this 40-acre property which provides seven cabins and six cottages, to accommodate 45 people, each including a refrigerator, microwave, coffee pot with coffee and tea, toaster, dishes and cable TV. Most cabins and cottages also have barbecues.

Enjoy onsite amenities such as a pool with sparkling waterfalls, relaxing hot tub, Clubhouse and trails. In the Clubhouse you can watch one of the two large screen TV's, read a book from the library, or play a game of pool.

Lazy Z Resort provides a unique setting for meeting space for executive retreats, successful board meetings, incentive trips, corporate strategy sessions, sales meetings, seminars and more. For smaller gatherings, check out their sister property, the Royal Olive Manor.



Meeting Spaces

Clubhouse (indoors)

Banquet and theater up to 50

Reception (standing) up to 70

Zeke's (outdoors)

Banquet up to 48

Reception (standing) up to 100

Front Lawn (outdoors)

Banquet and theater up to 200

Reception up to 300

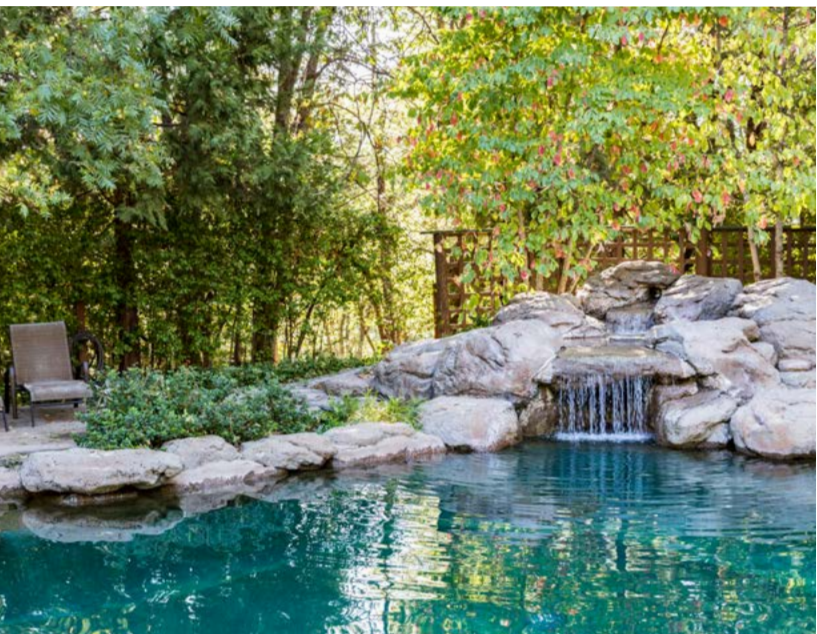
Contact

Launa Valente

(209) 586-1214

info@lazyz.com

lazyz.com



LILLASKOG LODGE

GROVELAND

Located only 11 miles from the Big Oak Flat entrance to Yosemite National Park, Lillaskog Lodge is nestled on a serene mountain top surrounded by the Stanislaus National Forest. It is perfect for family reunions, larger parties and special events such as retreats, weddings and more.

There are seven rooms available on the property, and all bedrooms are appointed with soft, quality bed linens, individual climate control, irons and flat screen satellite TV's. The property can accommodate up to 18-24 overnight guests, depending on use of sofa beds and rollaway beds. Bathrooms are stocked with big, soft, fluffy towels, hair dryers, complimentary soap, shampoo and conditioner. The Half Dome bathroom on the main floor is ADA wheelchair accessible with a removable elevated toilet seat and shower chair.

The Dining Area and Great Room both have floor-to-ceiling windows featuring incredible the views at Lillaskog Lodge. There is plenty of room for a larger group to gather for meals, and the wraparound deck has tables for extra seating or enjoying a meal or beverage while watching stunning sunsets. There is an entertainment center with a large, flat-screen satellite TV and plenty of games for all ages.



Meeting Space

Outdoors

130, Exclusive use of the whole property.

Contact

Events Manager

(209) 309-3177

lillaskoginfo@gmail.com

lillaskogyosemite.com

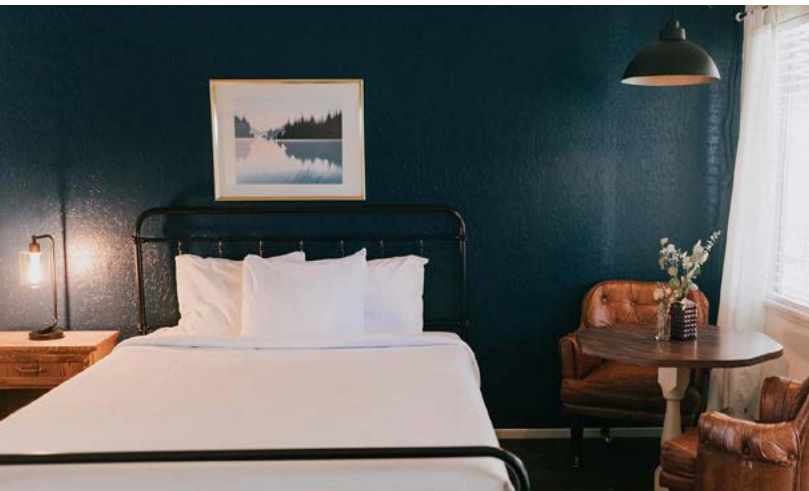


THE LONG BARN LODGE & EVENT CENTER

LONG BARN

The retro resort includes eight fully furnished cabins with kitchens, an ice-skating arena (open November through March), volleyball, horseshoes, BBQ/patio area, a beautiful garden and a 20-unit motel with newly-renovated guest rooms that include coffee makers, cable TV and WiFi.

The boutique ice-skating arena is transformed into a unique meeting space and is popular for weddings, family reunions, retreats and team building events. The friendly staff will help to make your event a success!



Meeting Spaces

Garden Area

Up to 350 people banquet set up

Ice Skating Rink

350 banquet set ups

Contact

Tim Herman, General Manager

(209) 586-3533

info@thelongbarnlodge.com

thelongbarnlodge.com

MCCAFFREY HOUSE BED & BREAKFAST

TWAIN HARTE

This enchanting Twain Harte/Sonora bed and breakfast inn is nestled in the quiet forest hollow of the High Sierra near Dodge Ridge Mountain Resort and Yosemite National Park. The gathering areas are spacious and beautifully decorated with a fascinating collection of furniture and art acquired during the owners' extensive travels. McCaffrey House is appointed with amenities that provide the utmost comfort and convenience. All six rooms are spacious and have exquisite views, and all guests receive a full hot breakfast and evening happy hour with wine, cheese, and crackers.

Take over the McCaffrey House for a reunion or business meeting, schedule a wedding, a massage or winemaker dinner. The property specializes in more intimate events from 2 to 30 people. The outdoor setting is ideal for garden weddings, while the elevated deck is perfect for those who want to be surrounded by majestic cedars and pines. Indoor options are also available in the living room, which includes a grand piano and casual seating for your guests.



Meeting Space

Garden Weddings

30

Contact

Stephanie McCaffrey

(209) 586-0757

innkeeper@mccaffreyhouse.com

mccaffreyhouse.com

MOUNT BROW VINEYARD

SONORA

Mount Brow Vineyard is an epic venue and vacation retreat on 82 acres of foothill charm with plenty of unique and stunning locations for photo shoots, weddings, events and more. The site includes a 3,300 square-foot vacation home that sleeps 14, a pool, bocce ball court, pool table and more. The 2,500 square-foot event barn is beautiful for any event and is a blank canvas that can be transformed into anything.



Meeting Spaces

Indoor & Outdoor Spaces

Up to 200

Contact

Jessica White, Owner/Operator

(209) 770-6702

info@mountbrowvineyard.com

mountbrowvineyard.com

NATIONAL HOTEL AND RESTAURANT

JAMESTOWN

This boutique historic hotel offers a full-service fine-dining restaurant and saloon. Each of the nine guest rooms has private baths with hand-tiled showers and pull-chain toilets, air conditioning and free WiFi. Hotel guests enjoy complimentary daily coffee bar and access to the Main Street view balcony.

This venue is perfect for smaller groups as it can handle meetings with up to 50 people, with some exceptions. They often hold small meetings of 5 to 20 in the rear dining room and have the ability to provide breakout services, including water, ice, coffee, teas, fresh fruit and all other food needs.



VIEW 360°

Meeting Spaces

Rear Dining Room

Up to 20

Entire Venue

Up to 50

Contact

Events Manager

(209) 984-3446

info@national-hotel.com

national-hotel.com

PINECREST CHALET

PINECREST

The Pinecrest Chalet is a mountain hotel and resort located near Pinecrest Lake and Dodge Ridge Mountain Resort. It offers RV sites, 23 amenity-filled cottages and chalets, which have full kitchens and sleep up to 14. The more intimate cottages are perfect for a cozy two- to four-person stay amidst majestic pines. Guests are invited to enjoy the community areas including a pool, bear garden and den full of good books, games and movies.

Pinecrest Chalet is a unique venue for weddings, family reunions and corporate events and retreats. The property includes a stunning outdoor amphitheater with seating for up to 250 guests. Looking over the spectacular river that will sparkle your heart. Pinecrest Chalet is a year-round property that can accommodate as many as 130 people. The site fee includes usage of the entire grounds, creekside amphitheater, bear garden, pool and lighting. Pinecrest Chalet elevates the planning experience with breathtaking outdoor scenery and personalized service.



Meeting Spaces

Pinecrest Chalet

130

Creekside Amphitheater

250

Contact

Front Desk

(209) 965-3276

frontdesk@pinecrestchalet.com

pinecrestchalet.com



THE HISTORIC SONORA INN

SONORA

Located in the heart of Downtown Sonora, the Historic Sonora Inn can accommodate 80 overnight guests in 30 newly remodeled guestrooms which include 4 Master Suites, including the Grace Kelly Suite, and 26 single/double rooms. All rooms are appointed with the best amenities like premium cable channels, coffeemakers and free WiFi.

A complimentary continental breakfast is served daily and you'll find free newspapers in the lobby for your convenience. The property has two spacious conference rooms that can also be joined to accommodate up to 80 people that are perfect for meetings or festive occasions.



Meeting Spaces

Rose Room

Theater up to 80, Classroom/banquet up to 45

Breakfast Room

Theater up to 60, Classroom/banquet up to 43

Rooftop Pool Deck

Outdoor up to 60

Contact

Jeff Michels, Owner

(209) 532-2400

jeff@sierranevadahospitality.com

thesonorainn.com

RED TAIL RANCH RETREAT

GROVELAND

Red Tail Ranch is a stunning 50-acre property nestled in the Sierra Nevada foothills community of Groveland, just outside Yosemite National Park. Surrounded by meadows and oak woodlands, all amenities, including multiple lodging options, are on site for individual gatherings, events, workshops or retreats. The property can accommodate up to 40 overnight guests with 5 glamping sites, 12 RV spaces and a fully equipped ranch house. There are numerous trails on and off the property for hiking, mountain biking, nature walks or simply strolling.

The Hirsch's consider themselves fortunate, current residents and caretakers of the land at Red Tail Ranch, rather than "owners." Their goals for Red Tail Ranch include habitat conservation and connecting people to nature. Protecting the rich natural and cultural resources on site is a critical component of the property. They deeply value facilitating experiences in nature, understanding that these encounters help people connect with and appreciate the natural world, hopefully becoming better stewards of the land themselves.



Meeting Spaces

Outdoor Space

150

Contact

Regina Hirsch, Owner

(209) 273-0025

redtailranchinfo@gmail.com

red-tail-ranch.com

THE ROYAL OLIVE MANOR

SONORA

Located in the foothills of the Sierra Nevada Mountains, this Sonora Bed & Brunch is filled with historic charm and timeless stories. The Royal Olive Manor was purchased in 2019 by the Zelinsky Family, who also owns sister property, Lazy Z Resort, but the home dates back to the late 1800's. It has three guest rooms, each with its own unique charm, featuring décor relative to select eras, private bathrooms and kitchens/kitchenettes. The grounds offer spacious grass areas along with outdoor tables and games.

This venue is perfect for small groups and events, from company board meetings and retreats to smaller weddings and bridal showers.



Meeting Spaces

Backyard (outdoors)

Up to 50 people

Table (indoors)

Up to 8 people

Contact

Parkyre Zelinsky-Salcedo, Manager

(209) 273-2209

parkyre.salcedo@gmail.com

royalolivemanor.com

RUSH CREEK LODGE AND SPA

GROVELAND

Ideal for destination events, retreats and weddings, Rush Creek Lodge features 143 guest rooms and customizable, full-service meeting and event space for groups up to 250. Guests may select open-air meeting options or indoor settings that can scale from casual to sophisticated throughout the seasons.

The Rush Creek on-site catering program offers plated, buffet and family-style meals for groups of 25 – 250. Menu options are varied and offer healthy, hearty, delicious California-style mountain lodge cuisine. Our creative approach to culinary preparation is inspired by our iconic surroundings and grounded in ingredients that are fresh, thoughtful, locally produced and environmentally sound. Menus are tailored to the needs and desires of the group.

Rush Creek is only 1.5 miles away from Yosemite National Park and offers customizable recreation and activity packages for groups, including guided trips and team building activities. Rush Creek's varied onsite activities and guest areas promote fun-filled, relaxing, informal interactions and bonding throughout each event, fostering the important connections desired in a group getaway.

You'll be amazed at what you can achieve with the help of our on-site planning experts, catering crew and recreation team.



Meeting Spaces

Facility	Sq. Ft.	Capacity
Event Hall	2,800	192
Event Hall Outdoor Patio	2,500	100
Bridal Veil Room	375	15
Partial Dining Room	750	48
Partial Dining Room & Terrace	1,050	60
Poolside BBQ Area	2,250	200
Pool Deck	12,500	500+
Wapama Room	212	10
Carlton Room	212	10
Sunset Deck (informal outdoor space with a view)	750	30



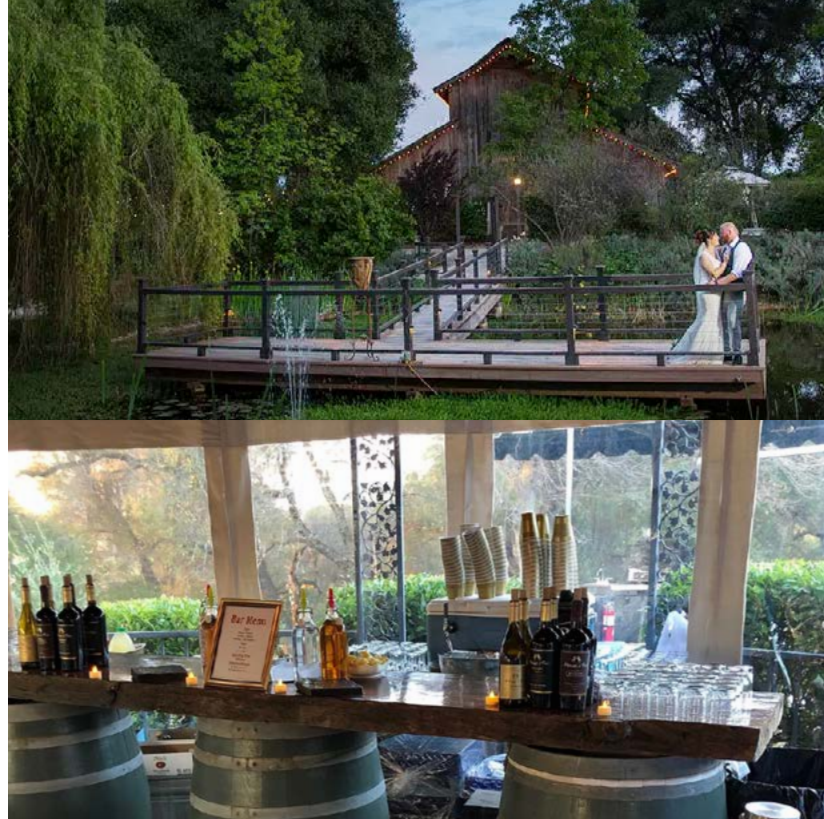
Contact

Event Sales
(209) 379-2373 x 1516
groups@rushcreeklodge.com
rushcreeklodge.com

UNION HILL INN

SONORA

An inviting and ideal rustic setting for gatherings of all sizes. Located in Sonora, the property offers four rooms in the main house plus three cottages to accommodate 37-40 overnight guests. Enjoy some team building time along the on-site trails made for walking, running and hiking. The grounds are everyone's favorite including the pavilions, gazebo, the foot bridge, various ponds, barns and the pool. Make sure to ask about "The Barn Stead" consisting of three party-friendly structures steeped in Gold Country history. Breakfast at the Inn includes homemade ingredients from the property's garden.



Meeting Spaces

Upper Terrace (outdoor)

20-50, depending on set up

Lower Terrace (outdoor)

30-50, depending on set up

Great Room

15-25, depending on set up

Near Barn & Rusty Buckle Bar

25-50

Chapel/Cabaret

40-80, depending on set up

Upper Pavilion (two lighted outdoor areas)

400 total (200 each area)

Grape Arbor and Deck

100 people in each area

Union Hall

275

Gazebo

25-40, depending on set up

Grand Pavilion

50-180, depending on set up

Entire Venue

175, contact venue for more details

Contact

Barbara Stutzman, Owner

(209) 533-1494

eventkeeper@yahoo.com

unionhillinn.com



UNIQUE

Event Facilities



JAMESTOWN

THE ARMORY

SONORA

The Armory is a distinctive venue in Downtown Sonora with an event center that specializes in delivering exceptional events and elevated dining experiences. From wedding receptions to retirement parties, bridal showers to birthdays, they have a space for every occasion. Menus range from deliciously-balanced casual to upscale, innovative cuisine. Select your space, customize your menu and let their experienced, professional staff assist you in hosting a flawless event.



Meeting Spaces

Wine Room

30

Sky Lounge

20

Bourbon Barrel

52

Rooftop Patio

40 (60 when combined with Sky Lounge)

Kennedy Room

130

Contact

Jenn Edwards, Managing Member

(209) 694-3158

info@armorysonora.com

armorysonora.com



ARONOS RESEARCH CLUB

SONORA

The historic Aronos Research Club building in Downtown Sonora is a quaint, historic venue appropriate for meetings, receptions, small weddings, parties and dances. Having been built in 1902, it was originally a Baptist Church. The building has one large room with hardwood floors, a high ceiling and stage for performances. There is a small kitchen, and tables and chairs are available. Public parking is available in the city parking garage a block away.



Meeting Spaces

Interior Room

50-80

Contact

Shelly Stewart

(209) 770-1144

aronosresearchclub@yahoo.com

GIANELLI VINEYARDS WINERY AND TASTING ROOM

JAMESTOWN

Located in Jamestown, Gianelli Vineyards & Winery not only stands as a testament to the past, but also as a wonderful example of the successful balance that can be achieved between old world traditions and modern-day innovation. As the winery and vineyards continue to thrive, the hope is to educate fellow vintners and the public about the wonderful, expressive character of Italian varietals grown here in the Sierra Foothills.

Specializing in weddings, the property offers breathtaking views of the Sierra Foothills, gorgeous sunsets and acres upon acres of established Italian grape vines. The Gianelli House overlooks Yosemite's peaks and takes in the beauty of Historic Jamestown. Smaller weddings can be held on the grassy area at the top of the hill, while larger groups may be accommodated in the middle of the vineyard at the Oak Tree Event Area with views of sunsets and vines. The happy couple can also opt to spend their first night together in the Bridal Suite atop the tasting room. Wake up to a glorious sunrise while enjoying a coffee on the private deck overlooking the entire vineyard.



Meeting Spaces

Vineyard Hilltop Venue

75

Oak Tree Event Area

200

Contact

Amy Veldstra

(209) 241-6845

amyveldstra@yahoo.com

gianellivineyards.com



THE GRILL AT PINE MOUNTAIN LAKE

GROVELAND

This 16,000 sq. ft. restaurant and lounge overlooks the Pine Mountain Lake Golf Course with majestic views of Yosemite's peaks. The spacious country club provides an unsurpassed setting for all kinds of special events such as business seminars, community luncheons, anniversary and birthday celebrations, bridal showers, rehearsal dinners, retirement parties and family reunions, just to name a few.

The outside deck is perfect for outdoor dining and cocktails. The clubhouse also provides free WiFi for members and customers, and meeting attendees will have the option to work from their laptops in between sessions. When you're not meeting, a round of golf makes the perfect team building event.



Meeting Space

Banquet Room
80

Contact

Event Manager
(209) 962-8638
cluboffice@pinemountainlake.com
pinemountainlake.com/the-grill

HURST RANCH

JAMESTOWN

Hurst Ranch is an idyllic farm with everything you need for a relaxed and rustic meeting, wedding or other event. Several outdoor areas include a deck overlooking the vineyards, olive grove, and rolling hills and a pond-side terrace. The large barn provides a blank canvas for a customized indoor space.

As a family run ranch, the Hurst's know how important these moments and big days are. They do everything in their power to ensure that your wedding day or event is exactly as you want it!



Meeting Spaces

Barn

Up to 150

Outdoor Area

300

Contact

Emily Hurst, Event Manager

(209) 984-3016

hurstranchjamestown.com

INDIGENY RESERVE

SONORA

Nestled in the hills of Historic Sonora, the world-class tasting bar features hard cider, brandy and vodka. Organic apple orchards, shaded picnic areas and indoor function rooms offer a variety of space options.

Founded by the Watson Family in 2007, Indigeny Reserve is a lush 160-acre apple preserve created with one thing in mind: to create the best hard ciders and spirits with organic apples. The facility offers self-guided nature trails, outdoor games and tours by arrangement.



Meeting Spaces



Barrel Room

8 banquet

Estate House

125

Granny Smith Picnic Area

Up to 85 people, 14 picnic tables

Honey Crisp Picnic Area

Up to 65 people, 12 picnic tables

Large Lawn

500

Medium Lawn

300

Small Lawn

125

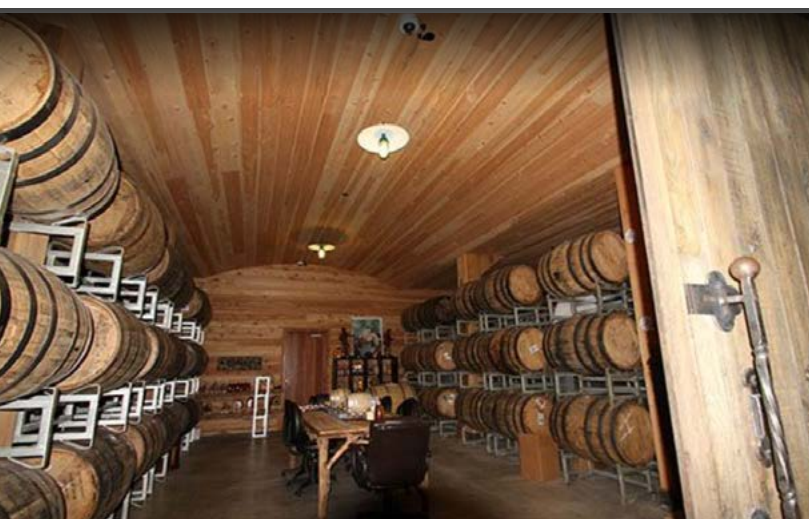
Contact

Cassandra Hard

(209) 533-9463

cassandrah@indigenyreserve.com

indigenyreserve.com



RAILTOWN 1897 STATE HISTORIC PARK

JAMESTOWN

Located in Jamestown, Railtown 1897 State Historic Park is a year-round venue and home to an interpretive center, the Depot Store and a historic, working roundhouse of the Sierra Railway. This one-of-a-kind attraction combines industrial heritage and railroad history with the lore of Hollywood's film industry.

Known as "The Movie Railroad," Railtown 1897 and the historic locomotives and railroad cars preserved here have appeared in more than 200 films, television productions and commercials. Still a popular Hollywood location site, Railtown 1897 has been called "the most photographed railroad in the world."

Whether you have small groups looking for a unique train venue experience, the entire train for private train rides, or large groups up to 400 people, your event at this historic state park will be memorable. Groups are welcome to tour the historic roundhouse and museum containing many film props used over the years.



Photo credit: The Taste Edit



Meeting Spaces

Location	Space	Capacity
Stationary	Carriage Room	45
	Picnic Area	500
	Caboose Stationary	20
Trains	Caboose	20
	599 Car	75
	Bar Car	50
	#14 and #12 Cars	82

Contact

Dianna Turner
(209) 984-3953
dianna.turner@parks.ca.gov
railtown1897.org

SONORA OPERA HALL

SONORA

The Opera Hall was built in 1885 and the City of Sonora acquired this "Jewel of the Mother Lode" in December of 1986. Located in Downtown Sonora, right in the heart of the central business district, its proximity to several hotels makes it the perfect location for a meeting or event.

The Historic Sonora Opera Hall has been beautifully restored and offers many unique features and amenities that give it character that you will not find in other facilities: elegant burgundy velvet draperies, coordinating carpet in entrance area and beautiful hardwood floors in the main area. The Hall is 72'7" x 52' with a stage area that is 16' x 34'. There's a large prep kitchen, sound system with microphones, accessible lift to the stage, nearby free parking and internet access.

Rentals are available and include 25 8' rectangular gray tables, five 6' rectangular gray tables, 205 gray chairs, a projection screen (no projector), and wooden podium with a microphone. Furniture for other set-ups is available locally.



Meeting Space

Opera Hall

Up to 170 banquet

Contact

Rachelle Kellogg,
Community Development Director
(209) 532-3508
rkellogg@sonoraca.com
sonoraca.com/opera-hall



THE STANDARD POUR

SONORA

The Standard Pour is a casual restaurant located on the outskirts of Sonora in the historic township of Standard and is housed in the old Pickering Lumber office building built in 1924. The venue provides a variety of options for private events. They can accommodate small or larger informal gatherings or corporate events. If you are looking for a fun, casual way to throw a party or private event, The Standard Pour can help, and can do everything from luncheons to appetizer bars, buffets and plated dinners.



Meeting Spaces



Conference Room

12

President's Room

24

Banquet Room

50

Patio (seasonal)

32

The Lawn (seasonal)

72

Contact

Event Manager

(209) 532-7687

standardpour@gmail.com

standard-pour.com

TELELI GOLF CLUB

SONORA

Located in the historic Gold Rush town of Sonora, this scenic 18-hole championship course was designed by Robert Muir Graves and opened in 1990. In 2019 the Tuolumne Band of Me-Wuk Indians purchased the property as a resort amenity to the Black Oak Casino and for the community.

Teleli Golf Club provides a fully stocked golf shop, full restaurant, bar, driving range, putting greens and four sets of tees to accommodate golfers of all abilities. Teleli Golf Club provides an outstanding facility. From groups of 12 to full course use and banquets, they can arrange and personalize the facilities and menu to satisfy your event specifications and needs. Rental equipment is also available, and the team can assist in professional tournament preparations and golf event/outing planning.



Meeting Spaces

Clubhouse

Theater up to 100, banquet up to 75 and reception up to 120

Outdoor Tented Area

Theater up to 130, banquet up to 100 and reception up to 150

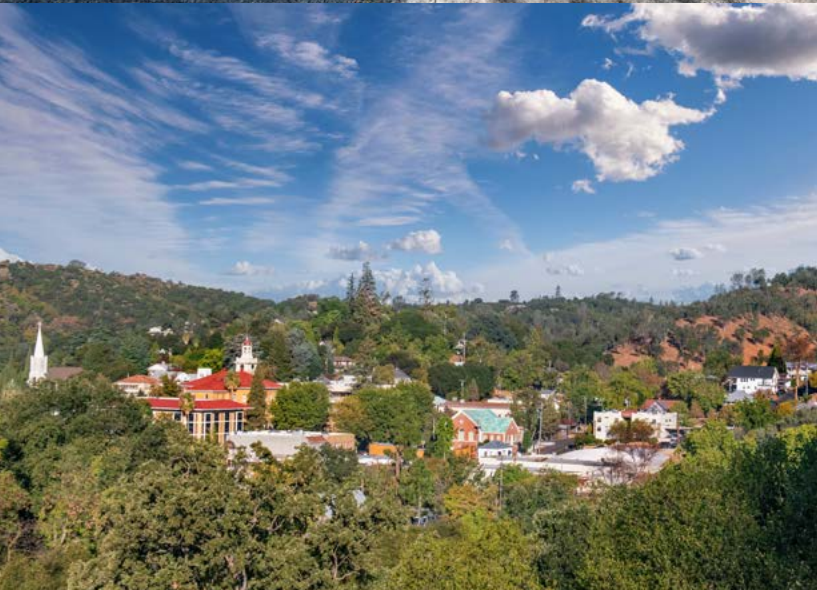
Contact

Food/Beverage and Banquets Manager
(209) 532-1000
teleligolfclub.com

TUOLUMNE COUNTY MUSEUM

SONORA

What is now the Tuolumne County Museum in Downtown Sonora actually served as the county jail from its construction in 1865 until 1960. The shaded courtyard forged by red brick walls is a unique outdoor venue for meetings, weddings and other gatherings.



Meeting Spaces

Courtyard
100

Contact

Tuolumne County Parks & Recreation
(209) 533-5663
eatken@co.tuolumne.ca.us
[tuolumnecounty.ca.gov/facilities/facility/
details/museum-courtyard-15](https://tuolumnecounty.ca.gov/facilities/facility/details/museum-courtyard-15)

SERVICES

Always Ready to Help



Go to [VisitTuolumne.com/groups-and-meetings](https://www.visitTuolumne.com/groups-and-meetings) for more services.

Floral

WILDBUD CO

Located in the heart of Downtown Sonora, Wildbud specializes in modern floral design for weddings, events and daily orders. They also offer a variety of other choices such as fruit baskets, gourmet snack baskets and more.

Bring your group of 6 or more for a floral design workshop. All workshops are booked after shop hours, so the shop and the team's attention is all yours. Workshops are roughly 3 hours, and include time for cocktail hour and mingling before (not provided by Wildbud) and covers an introduction and education into the basics of floral and design.



Meeting Spaces

In shop

Contact

Cheyenne Radanovich or Ashley Moore
(209) 288-2051
shop@wildbudco.com
www.wildbud.co

SONORA FLORIST & BEAR'S GARDEN FLORIST

Two full-service local florists in Sonora, one downtown and the other in The Junction Shopping Center, do weddings and events with a large assortment of flowers and modern designs.



Contact

(209) 532-9533
sonoraflorist@gmail.com
sonoraflorist.com

Photography

JENNIFER RAPOZA PHOTOGRAPHY

Photographer Jennifer Rapoza specializes in destination weddings, engagements, surprise proposals, elopements, family and high school senior photography. She enjoys casual, fun photo sessions tailored to the unique personality of each family, group and individual.



Contact

Jennifer Rapoza
(209) 613-4476
jrapozaphoto@gmail.com
jenniferrapozaphotography.com

SABRINA JOVANNA PHOTOGRAPHY

Sabrina Jovanna is a Tuolumne County native who specializes in photographing people in various places throughout the County. Specializing in family and children's portraits but absolutely loves to photograph weddings as well! She believes the Mother Lode has endless locations to photograph and has the most beautiful expressions of the changing seasons.



Contact

Sabrina Jovanna
(209) 559-5804
sabrinasabrina@sabrinajovanna.com
sabrinajovanna.com

JOLEEN WILLIS PHOTOGRAPHY

Joleen Willis is a wedding and elopement photographer based out of Tuolumne County, near Yosemite. Nothing gives her greater joy than documenting a part of your story among the grandeur of the Sierra Nevada. Her photography style is a mix of gentle direction in posed photographs combined with beautifully imperfect candid moments. Joleen can capture large weddings and events to small and adventurous events.

Contact

Joleen Willis
(209) 768-6016
joleen@joleenwillis.com
joleenwillis.com



Catering

THE BRANCH

Whether it's for a wedding or office lunch, or anything in between, The Branch has an option for you. They offer private events at the restaurant, on-site catering and pick-up or drop-off options (based on availability and party size). The options are endless and they want to make this easy for you.

Contact

(209) 586-1402

hello@thebranchtwainharte.com
thebranchtwainharte.com

PINOCCHIO'S

The Pinocchio's family recipes have been passed down through four generations and they are honored to share them with you. They specialize in homemade sauces, oven-baked sandwiches, fresh salads and hearty soups. Pinocchio's offers a variety of options for your event.

Contact

(209) 533-1996

info@pinocchiositalianrestaurant.com
pinocchiositalianrestaurant.com

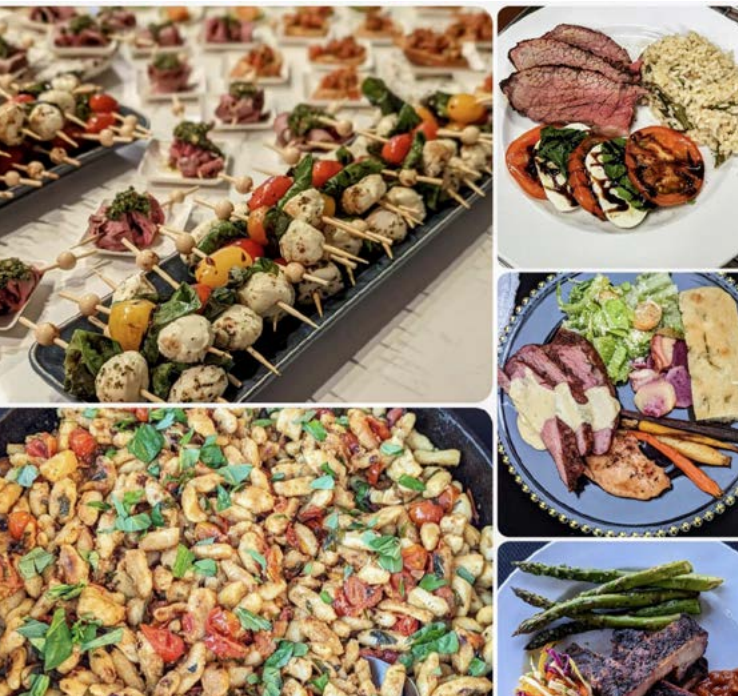


CRUMB CATERING & CONFECTIONS

Crumb Catering & Confections offers a wide variety of dishes and desserts for all of your events. With their wood oven, smoker, barbecue, and passion for variety and ethnic cuisines, the opportunities are endless! Using fresh, local, and organic ingredients means the food is outstanding in taste and presentation.

Contact

(209) 770-4506
crumbcandc@gmail.com
crumbcc.com



DEVON'S DELECTABLES

Devon's Delectables offers all occasion catering, personal chef meal service, custom wedding and special occasion cakes, pastries and desserts. With over 30 years of professional experience, Devon's provides exceptional quality and customer service, dependability, along with the craftsmanship and attention to detail that you, your family and your guests will appreciate.

Contact

Devon Woodruff
(209) 324-0187
devon@devonsdelectables.com



Formal Wear

THE BRIDAL VAULT

The Bridal Vault in Jamestown is an intimate bridal boutique providing the ultimate bridal experience. The one-stop-shop offers a wide selection of gowns to choose from along with bridal party attire, tuxedo rentals, wedding planning and coordinating services, alterations and a beautiful wedding day Bridal Suite available for the Bride and her bridesmaids.

Contact

Kelsey East
(209) 559-9039
thebridalvault@gmail.com
thebridalvault.com

THE BRIDAL LOFT

The knowledgeable staff at The Bridal Loft in Downtown Sonora will help you find the dress of your dreams and wants your experience to be as enjoyable as possible, therefore only sees brides by appointment. Besides bridal gowns, they also provide bridesmaids dresses and tuxedo rentals.

Contact

(209) 352-1114 or (209) 694-6923
thebridalloft55@gmail.com
sonorabridalloft.com



More Services

AMALA DETOX & TEA LOUNGE

Be pampered at Amala Detox and Tea Lounge with ionic foot soaks, looseleaf teas, infrared sauna therapy, organic spray tanning, facials, massage therapy and more. They also host private parties.

Contact

(209) 694-7241
healthytribe@amaladetox.com
amaladetox.com



SOUND EXTREME PRODUCTIONS

Sound Extreme Productions understands that your choice in disc jockey, lighting, staging, décor, or sound reinforcement is one of the most important decisions you'll be making as you plan your special event. Sound Extreme is here to help plan, coordinate and make your event a huge success.

Contact

(209) 532-0868
info@soundextreme.com
soundextreme.com

PREMIER EVENT RENTALS

From seating and dinnerware to dance floors and cotton candy machines, Premier Event Rentals has a wide selection of rentals to help make your vision for your next event come to life. They are committed to your event. Ask about delivery and set up options.

Contact

(209) 694-3178
premiereeventrentals@gmail.com
eventrentals-premiere.com

TEAM BUILDING & ACTIVITIES

Dream, Do, Be in Tuolumne County



PINECREST

TEAM BUILDING & GUIDED TOURS

Tuolumne County's expert guide services deliver excellent group experiences in the outdoors. Each has its own specialties that can align with your needs. Whether it's an interpretive hike into the woods, a photography adventure, a fishing excursion, a thrilling off-road ride, or other type of experience you will get the results you're after.

Echo Adventure Cooperative
(209) 732-5161
echocoop.com

Miller's Off-Road Adventures
(209) 431-9153
millersoffroadadventures.com

Lasting Adventures
(800) 513-8651
lastingadventures.com

YExplore Yosemite Adventures
(209) 532-7014
yexplore.com



WHITE WATER RAFTING

Whitewater rafting with one of several renowned outfitters on the Wild and Scenic Tuolumne River is an adventure like no other. The Tuolumne River is California's premier wilderness whitewater, and each expert and reputable guide service provides a unique specialty to your group's river experience.

ARTA River Trips
(209) 962-7873
arta.org

OARS
(209) 736-4677
oars.com

Sierra Mac River Trips
(209) 591-8027
sierramac.com

**All Outdoors California
Whitewater Rafting**
(925) 932-8993
aorafting.com

Zephyr River Expeditions
(209) 532-6249
zrafting.com



HORSEBACK RIDING

Take your group to see the Sierra the way the settlers first saw it--on horseback! From a leisurely half-hour ride to an adventuresome week-long pack trip into the Emigrant Wilderness, you'll see the best of the mountains from the best seat in the house — your saddle.

Aspen Meadow Pack Station
(209) 965-3402
aspenmeadowpackstation.com

Kennedy Meadows Pack Station
(209) 965-3900
kennedymeadows.com

Pine Mountain Lake Equestrian Center
(209) 962-8667
pinemountainlake.com/equestrian



OTHER ACTIVITIES

Try something a little unconventional to get creative juices flowing. Try a painting party at your meeting venue or visit a Gold Country ranch for team-building programs that include interacting with horses.

Fun Fine Artist
(209) 984-6077
funfineartist.com

Chester & Push Horse Experience
(209) 454-9293
chesterandpushhorserescue.org





visit
TUOLUMNE
county
YOSEMITE • GOLD COUNTRY • HIGH SIERRA

Visit Tuolumne County • 193 S Washington St.
Sonora, California 95370 • (800) 446-1333 • VisitTuolumne.com



West Side Trail, Tuolumne
Photo: Local Freshies® / High Sierra Visitors Council

The 2023 Tuolumne County Meeting Planner is copyright ©2023 by Visit Tuolumne County, which has made every effort to ensure the accuracy of the information contained herein, but assumes no responsibility for errors, changes or omissions.