

# Meet Freely

## MEETINGS, EVENTS, & CONVENTIONS

### INFORMATIONAL GUIDE

HETCH HETCHY RESERVOIR  
YOSEMITE NATIONAL PARK



# CONTENTS

Welcome and Overview .....	1
Why Use a Visitors Bureau .....	2
Travel & Transportation .....	4
Meaningful & Responsible Travel .....	5
Weddings & Elopements .....	6
Venues with Lodging .....	7
Unique Event Facilities .....	26
Services .....	40
Team Building & Activities .....	48



JAMESTOWN





# WANDERING WORKS *Wonders*

Meet up with amazing and step into Tuolumne County, and immerse yourself in a single destination that offers three regions for naturally productive meetings and incredible events. Experience iconic and uncrowded Yosemite National Park, make golden discoveries in California Gold Country, or explore the exciting High Sierra.

Tuolumne County is very close, just 2 1/2 hours from the San Francisco Bay Area and 2 hours from Sacramento, and yet you and your group will feel as though they're a world away. With unique indoor and outdoor venues, great places to stay, and exciting activities, Tuolumne County is close, affordable, and ready to make your gathering distinctly memorable.

*Call our office for assistance in creating your next event: (800) 446-1333*



Kennedy Meadows



# VISIT TUOLUMNE COUNTY

## *Always Here to Help*

Any question, any need, Visit Tuolumne County is your single point of contact. This free service is primed with local knowledge and can help you streamline the process, provide team-building itineraries, suggest great restaurants and more.

Call our office for assistance in creating your next event: (800) 446-1333 or visit [visittuolumne.com/groups-and-meetings](http://visittuolumne.com/groups-and-meetings)

Check out Visit Tuolumne County on



Visit us at the Visitors Center:  
**193 S. Washington St.**  
**Sonora, CA 95370**



## *Benefit from an Incentive!*

Book your first business or corporate meeting through Visit Tuolumne County and receive a sponsorship.

- **\$500 for 10-24 room nights**
- **\$750 for 25-49 room nights**
- **\$1,000 for 50-100 room nights**

Contact us for details on how to receive the sponsorship incentive.



# Natural Beauty Well Within Reach

By car or by air, you won't have far to go to reach Tuolumne County. The closest airports are San Francisco, Oakland, Sacramento and Fresno with a two to three hour drive to follow. Road conditions are generally favorable, however during the winter months drivers may be required to carry tire chains and install them on their tires to access select roads, particularly those in Yosemite National Park.



## Driving Distance

**FROM SACRAMENTO:** 95 MILES, 1 HOUR AND 55 MINUTES

**FROM DUBLIN/PLEASANTON:** 98 MILES, 1 HOUR AND 55 MINUTES

**FROM OAKLAND:** 124 MILES, 2 HOURS AND 15 MINUTES

**FROM SAN JOSE:** 129 MILES, 2 HOURS AND 30 MINUTES

**FROM SAN FRANCISCO:** 132 MILES, 2 HOURS AND 30 MINUTES

**FROM FRESNO:** 148 MILES, 3 HOURS AND 20 MINUTES



# Public Transportation

Travel to Yosemite is especially convenient with Yosemite Area Regional Transit System (YARTS). They offer daily round-trip bus service from several Tuolumne County locations to Yosemite Valley from May through September.

YARTS service from Tuolumne County to the Welcome Center in Yosemite Valley includes your park entrance fee, features breathtaking scenery and knowledgeable drivers, and there is no need for a park reservation.

[yarts.com](http://yarts.com) ★

Mother Lode Adventures Charter and Tours offer customized tours as well as transportation to and from major airports. Ride share apps also have limited service in the area. [mlacharters.com](http://mlacharters.com) ★





## MEANINGFUL TRAVEL

### *Keeping Tuolumne County Safe & Beautiful*

Responsible travel involves preserving our natural environment, making sure to leave no trace by staying on the trails and packing out your trash. It involves understanding the causes for wildfires and how to help prevent them. It also involves being respectful of the region and others staying or living in the area.



**Stay on trails**



**Pack out what you pack in**



**Be wildfire safe**



**Be respectful**

### *Meaningful Travel*

Many opportunities exist in Tuolumne County for your group to have a meaningful experience, whether it is participating in trail work, tree plantings or river clean-ups, or getting immersed in local Native America culture, there is something available to enhance your experience and make it memorable and fulfilling. Find out more:

**[VisitTuolumne.com/meaningful-travel](https://www.visittuolumne.com/meaningful-travel)**



TUOLUMNE GROVE  
OF GIANT SEQUOIAS,  
YOSEMITE NATIONAL PARK



## WEDDINGS

# *Your Forever Starts Here*

## PLAN THE PERFECT WEDDING IN TUOLUMNE COUNTY

Natural beauty and historic charm make Tuolumne County a dream destination for your special day. Opt for an 1860's Victorian Hotel, a secluded garden setting at a charming B&B or embrace the natural beauty and exquisite service at one of our mountain resorts. There are also traditional wedding and banquet facilities that can accommodate up to 250 guests. There are a lot of ways to make memorable moments in Tuolumne County.





# Venues

WITH LODGING

★ Indicates Visit Tuolumne County Partners

● Evergreen Lodge



# BEST WESTERN SONORA OAKS HOTEL AND CONFERENCE CENTER

## SONORA

Experience the natural beauty of the Sonora area, while staying at this charming property near Yosemite and local wineries. All guests can enjoy a complimentary full, hot breakfast, free parking, a seasonal outdoor heated pool, exercise facility and WiFi throughout the property. The hotel can accommodate up to 382 overnight guests in 100 rooms.

The banquet and conference facilities are great for wedding receptions, family reunions, celebrations of life, baby showers, and corporate trainings. Additional meeting facilities are available and are perfect for more intimate events such as smaller family gatherings, depositions, and small business meetings.



## Meeting Spaces



### Oak Glen Conference Room

150 banquet rounds

150 theater style

60 classroom style

### Executive Boardroom

14

### The BBQ Patio

25

## Contact

Kathy Hakl

(209) 533-4400

[sales@bwsonoraoaks.com](mailto:sales@bwsonoraoaks.com)

[bestwestern.com](http://bestwestern.com)



# CHICKEN RANCH CASINO RESORT

JAMESTOWN

Chicken Ranch Casino Resort isn't just a spot to spread your wings and peck at some fun – it's also an ultimate destination for events, corporate gatherings, and large groups. The new property combines contemporary resort amenities and natural scenic beauty, making it a perfect place for colleagues, friends, and family to get away from it all.

Enjoy over 12,000 sq. ft. of meetings and event space, nine diverse food and drink venues, and a unique experience that'll leave a lasting impression on your next big gathering.

The resort, which is located 60 minutes from Yosemite National Park, has 175 luxurious guest rooms and 22 suites and a resort-style pool for relaxing down-time.



## Meeting Spaces

Room Name	U-Shape	Classroom	Banquet	Reception
Pre-function Area	-	24	-	300
Brahma	102-247	203-359	297-718	357-836
Silkie Boardroom	30 (executive seating)	-	-	-
Welsummer	-	35	30	40
Lohmann	-	30	20	25
Sebright	-	40	40	45
Perch Rooftop Dining	-	-	100	180
Trophy Rooms			9 per room	

## Contact

**Event Sales**  
**(209) 984-3000 x 2508**  
**eventsales@crcresort.com**  
**[chickenranchcasinoresort.com](http://chickenranchcasinoresort.com)**



# THE HOTEL AT BLACK OAK CASINO RESORT

## TUOLUMNE

Featuring 148 spacious, smoke-free rooms and suites, THE HOTEL is the perfect luxury escape. Ideally located near Yosemite National Park and historic Gold Country, rooms feature luxurious bedding, WiFi, complimentary Keurig coffee brewer, mini refrigerator and microwave. There are also family fun activities such as bowling and an arcade on-site along with a golf course 20 minutes from the resort. Round out your stay by visiting the casino for casual and fine dining at one of the five restaurants, a nightcap at one of the two bars, gaming and endless entertainment for all ages.

With event space ranging from 8 to 590 people, there is an option for every kind of meeting need, from large corporate events and weddings to more intimate gatherings.



## Meeting Spaces

Meeting Room	L x W	Sq. Ft.	72" Rounds	Theater	U-Shape	Conference	Classroom	Reception	8 X 10 Booth	8 X 10 Booth
Executive Boardroom	-	700	-	-	-	14	-	30	-	-
Dogwood	31' x 27'	860	50	75	24	26	40	86	-	-
Redbud	31' x 27'	860	50	75	24	26	40	86	10	-
Dogwood/Redbud	62' x 27'	1720	120	150	66	54	80	165	-	8
Cedar	31' x 27'	860	50	75	24	26	40	86	-	-
Manzanita	31' x 27'	860	50	75	24	26	40	86	10	-
Cedar/Manzanita	62' x 27'	1720	120	150	62	54	80	165	25	8
Four Winds	62' x 65'	3900	250	370	-	-	186	405	12	20
Prefunction Room	31' x 65'	2000	120	182	-	-	90	195	32	9
Four Winds & Prefunction	93' x 65'	5900	360	475	-	-	-	590	-	26

## Contact

Cissy Frazier, Sales Coordinator  
 (209) 928-9522  
[cfrazier@blackoakcasino.com](mailto:cfrazier@blackoakcasino.com)  
[blackoakcasino.com](http://blackoakcasino.com)



# EVERGREEN LODGE

## GROVELAND

Evergreen Lodge is a classic mountain resort that is a Frommer's Favorite and highly recommended by Fodor's California. The historic lodge offers 88 cozy cabins in the woods, a full-service restaurant and tavern, recreation center, meeting/event hall, general store, pool, guided outdoor recreation trips, nightly activities and is only 8 miles from the entrance of Yosemite National Park.

Groups at Evergreen can meet in various indoor spaces or outdoors in the company of towering pines. Facilities can accommodate planning sessions, sales meetings and conventions, retreats, outings, holiday parties, association gatherings and more.



## Meeting Spaces

Room Name	Theater	Classroom	Banquet	Reception
Tuolumne Hall	130	110	100	100
Board Room	20	15	18	25
Cedar Room	40	18	36	40
Outdoor Plaza	200	225	-	-
Coyote Hill (outdoor)	200	150	200	225
Wapama Grove	200	50	-	100

*\*Numbers not maximum capacities.*

## Contact

**Event Sales**  
**(209) 379-2373 x 1516**  
**groups@rushcreeklodge.com**  
**evergreenlodge.com**



# FIREFALL RANCH

## GROVELAND

Gather for meetings and retreats that are a world away from the everyday, or exchange your vows surrounded by Yosemite's breathtaking scenery. Firefall Ranch can accommodate groups ranging from 20 to 225 people. Our variety of indoor and outdoor spaces provide endless options for meetings and retreats. With luxury lodging options and an onsite catering and event team, your event guests will thank you for years to come.



## Contact

**Event Sales**  
(209) 379-2373 x 1516  
[groups@firefallranch.com](mailto:groups@firefallranch.com)  
[firefallranch.com](http://firefallranch.com)

## Meeting Spaces

Room Name	Theater	Classroom	Banquet	Reception
Perigrine Hall	330	200	230	330
Private Dining Room	60	38	45	60
Wine Room	30	18	20	30



# GROVELAND HOTEL

## GROVELAND

Near Yosemite National Park, the Groveland Hotel's outdoor courtyard provides ambiance and casual elegance for private parties and special events. Each of the 18 unique rooms includes free WiFi, telephone/voicemail and complimentary coffee and tea.

Provisions Restaurant situated in the hotel's 1849 Adobe building carries several craft beers and ciders on tap, a wide selection of local wines, plus has a menu of elegant freshly-made comfort food.



## Meeting Spaces

### Outdoor Courtyard

Up to 98

## Contact

Manager

(209) 962-4000

[stay@innsofgroveland.com](mailto:stay@innsofgroveland.com)

[groveland.com](http://groveland.com)



# HOTEL LUMBERJACK

## SONORA

Hotel Lumberjack is located at the center of historic Sonora, California, and is a newly envisaged Americana Motel experience. Your group will enjoy a central location with shopping, dining, wine, beer, and cider tasting and all the outdoor recreation imaginable within a short distance. Guest rooms have been thoughtfully designed with working niches, oversized beds and large walk-in showers with eco-friendly amenities throughout. 34 guest rooms can accommodate 104 overnight guests. Meeting space is located in Hotel Lumberjack's sister property, The Sonora Inn located directly across the street.



## Meeting Spaces

Located at sister property, The Sonora Inn across the street.

### Rose Room

Theater up to 80, Classroom/banquet up to 45

### Breakfast Room

Theater up to 60, Classroom/banquet up to 43

### Rooftop Pool Deck

Outdoor up to 60

## Contact

Jeff Michels, Owner

(209) 532-2400

[jeff@sierranevadahospitality.com](mailto:jeff@sierranevadahospitality.com)

[hotellumberjack.com](http://hotellumberjack.com)



# LAZY Z RESORT

## TWAIN HARTE

Minutes away from the town of Twain Harte, the Lazy Z Resort invites you to experience a true mountain retreat with breathtaking surroundings. Stretch out and be inspired at this 40-acre property which provides seven cabins and six cottages, to accommodate 45 people, each including a refrigerator, microwave, coffee pot with coffee and tea, toaster, dishes and cable TV. Most cabins and cottages also have barbecues.

Enjoy onsite amenities such as a pool with sparkling waterfalls, relaxing hot tub, Clubhouse and trails. In the Clubhouse you can watch one of the two large screen TV's, read a book from the library, or play a game of pool.

Lazy Z Resort provides a unique setting for meeting space for executive retreats, successful board meetings, incentive trips, corporate strategy sessions, sales meetings, seminars and more. For smaller gatherings, check out their sister property, the Royal Olive Manor.



## Meeting Spaces

### Clubhouse (indoors)

Banquet and theater up to 50  
Reception (standing) up to 70

### Zeke's (outdoors)

Banquet up to 48  
Reception (standing) up to 100

### Front Lawn (outdoors)

Banquet and theater up to 200  
Reception up to 300

## Contact

Launa Valente  
(209) 586-1214  
info@lazyz.com  
lazyz.com





# LILLASKOG LODGE

## GROVELAND

Located only 11 miles from the Big Oak Flat entrance to Yosemite National Park, Lillaskog Lodge is nestled on a serene mountain top surrounded by the Stanislaus National Forest. It is perfect for family reunions, larger parties and special events such as retreats, weddings and more.

There are seven rooms available on the property, and all bedrooms are appointed with soft, quality bed linens, individual climate control, irons and flat screen satellite TV's. The property can accommodate up to 18-24 overnight guests, depending on use of sofa beds and rollaway beds. Bathrooms are stocked with big, soft, fluffy towels, hair dryers, complimentary soap, shampoo and conditioner. The Half Dome bathroom on the main floor is ADA wheelchair accessible with a removable elevated toilet seat and shower chair.

The Dining Area and Great Room both have floor-to-ceiling windows featuring incredible the views at Lillaskog Lodge. There is plenty of room for a larger group to gather for meals, and the wraparound deck has tables for extra seating or enjoying a meal or beverage while watching stunning sunsets. There is an entertainment center with a large, flat-screen satellite TV and plenty of games for all ages.



## Meeting Space

### Outdoors

130, Exclusive use of the whole property.

## Contact

### Events Manager

(209) 309-3177

[lillaskoginfo@gmail.com](mailto:lillaskoginfo@gmail.com)

[lillaskogyosemite.com](http://lillaskogyosemite.com)





# THE LONG BARN LODGE & EVENT CENTER

## LONG BARN

The retro resort includes eight fully furnished cabins with kitchens, an ice-skating arena (open November through March), volleyball, horseshoes, BBQ/patio area, a beautiful garden and a 20-unit motel with newly-renovated guest rooms that include coffee makers, cable TV and WiFi.

The boutique ice-skating arena is transformed into a unique meeting space and is popular for weddings, family reunions, retreats and team building events. The friendly staff will help to make your event a success!



## *Meeting Spaces*

### **Garden Area**

Up to 350 people banquet set up

### **Ice Skating Rink**

350 banquet set ups

## *Contact*

**Tim Herman, General Manager**

**(209) 586-3533**

**[info@thelongbarnlodge.com](mailto:info@thelongbarnlodge.com)**

**[thelongbarnlodge.com](http://thelongbarnlodge.com)**



# MCCAFFREY HOUSE BED & BREAKFAST

## TWAIN HARTE

This enchanting Twain Harte/Sonora bed and breakfast inn is nestled in the quiet forest hollow of the High Sierra near Dodge Ridge Mountain Resort and Yosemite National Park. The gathering areas are spacious and beautifully decorated with a fascinating collection of furniture and art acquired during the owners' extensive travels. McCaffrey House is appointed with amenities that provide the utmost comfort and convenience. All six rooms are spacious and have exquisite views, and all guests receive a full hot breakfast and evening happy hour with wine, cheese, and crackers.

Take over the McCaffrey House for a reunion or business meeting, schedule a wedding, a massage or winemaker dinner. The property specializes in more intimate events from 2 to 30 people. The outdoor setting is ideal for garden weddings, while the elevated deck is perfect for those who want to be surrounded by majestic cedars and pines. Indoor options are also available in the living room, which includes a grand piano and casual seating for your guests.



## Meeting Space

### Garden Weddings

30

## Contact

Stephanie McCaffrey

(209) 586-0757

[innkeeper@mccaffreyhouse.com](mailto:innkeeper@mccaffreyhouse.com)

[mccaffreyhouse.com](http://mccaffreyhouse.com)



# MOUNT BROW VINEYARD

SONORA

Mount Brow Vineyard is an epic venue and vacation retreat on 82 acres of foothill charm with plenty of unique and stunning locations for photo shoots, weddings, events and more. The site includes a 3,300 square-foot vacation home that sleeps 14, a pool, bocce ball court, pool table and more. The 2,500 square-foot event barn is beautiful for any event and is a blank canvas that can be transformed into anything.



## Meeting Spaces

**Indoor & Outdoor Spaces**

Up to 200

## Contact

**Jessica White, Owner/Operator**

**(209) 770-6702**

**info@mountbrowvineyard.com**

**mountbrowvineyard.com**



# PINECREST CHALET

## PINECREST

The Pinecrest Chalet is a mountain hotel and resort located near Pinecrest Lake and Dodge Ridge Mountain Resort. It offers RV sites, 23 amenity-filled cottages and chalets, which have full kitchens and sleep up to 14. The more intimate cottages are perfect for a cozy two- to four-person stay amidst majestic pines. Guests are invited to enjoy the community areas including a pool, bear garden and den full of good books, games and movies.

Pinecrest Chalet is a unique venue for weddings, family reunions and corporate events and retreats. The property includes a stunning outdoor amphitheater with seating for up to 250 guests. Looking over the spectacular river that will sparkle your heart. Pinecrest Chalet is a year-round property that can accommodate as many as 130 people. The site fee includes usage of the entire grounds, creekside amphitheater, bear garden, pool and lighting. Pinecrest Chalet elevates the planning experience with breathtaking outdoor scenery and personalized service.



## Meeting Spaces

### Pinecrest Chalet

130

### Creekside Amphitheater

250

## Contact

### Front Desk

(209) 965-3276

[frontdesk@pinecrestchalet.com](mailto:frontdesk@pinecrestchalet.com)

[pinecrestchalet.com](http://pinecrestchalet.com)





# THE HISTORIC SONORA INN

## SONORA

Located in the heart of Downtown Sonora, the Historic Sonora Inn can accommodate 80 overnight quests in 30 newly remodeled guestrooms which include 4 Master Suites, including the Grace Kelly Suite, and 26 single/double rooms. All rooms are appointed with the best amenities like premium cable channels, coffeemakers and free WiFi.

A complimentary continental breakfast is served daily and you'll find free newspapers in the lobby for your convenience. The property has two spacious conference rooms that can also be joined to accommodate up to 80 people that are perfect for meetings or festive occasions.



## Meeting Spaces

### Rose Room

Theater up to 80, Classroom/banquet up to 45

### Breakfast Room

Theater up to 60, Classroom/banquet up to 43

### Rooftop Pool Deck

Outdoor up to 60

## Contact

Jeff Michels, Owner

(209) 532-2400

[jeff@sierranevadahospitality.com](mailto:jeff@sierranevadahospitality.com)

[thesonorainn.com](http://thesonorainn.com)



# RED TAIL RANCH RETREAT

## GROVELAND

Red Tail Ranch is a stunning 50-acre property nestled in the Sierra Nevada foothills community of Groveland, just outside Yosemite National Park. Surrounded by meadows and oak woodlands, all amenities, including multiple lodging options, are on site for individual gatherings, events, workshops or retreats. The property can accommodate up to 40 overnight guests with 5 glamping sites, 12 RV spaces and a fully equipped ranch house. There are numerous trails on and off the property for hiking, mountain biking, nature walks or simply strolling.

The Hirsch's consider themselves fortunate, current residents and caretakers of the land at Red Tail Ranch, rather than "owners." Their goals for Red Tail Ranch include habitat conservation and connecting people to nature. Protecting the rich natural and cultural resources on site is a critical component of the property. They deeply value facilitating experiences in nature, understanding that these encounters help people connect with and appreciate the natural world, hopefully becoming better stewards of the land themselves.



## Meeting Spaces

### Outdoor Space

150

## Contact

Regina Hirsch, Owner

(209) 273-0025

[redtailranchinfo@gmail.com](mailto:redtailranchinfo@gmail.com)

[red-tail-ranch.com](http://red-tail-ranch.com)



# RUSH CREEK LODGE AND SPA

## GROVELAND

Ideal for destination events, retreats and weddings, Rush Creek Lodge features 143 guest rooms, including villas, and customizable, full-service meeting and event space for groups up to 250. Guests may select open-air meeting options or indoor settings that can scale from casual to sophisticated throughout the seasons.

The on-site catering program offers plated, buffet and family-style meals for groups of 25 – 250. Menu options are varied and offer healthy, hearty, delicious California-style mountain lodge cuisine. Our creative approach to culinary preparation is inspired by our iconic surroundings and grounded in ingredients that are fresh, thoughtful, locally produced and environmentally sound.

Rush Creek is only 1.5 miles away from Yosemite National Park and offers customizable recreation and activity packages for groups, including guided trips and team building activities. Rush Creek's varied onsite activities and guest areas, including an indoor-outdoor spa, promote fun-filled, relaxing, and informal interactions throughout each event, fostering the important connections desired in a group getaway.

You will be amazed at what you can achieve with the help of our on-site planning experts, catering crew and recreation team.

## Contact

**Event Sales**  
**(209) 379-2373 x 1516**  
**groups@rushcreeklodge.com**  
**rushcreeklodge.com**



## Meeting Spaces

Facility	Sq. Ft.	Capacity
Event Hall	2,800	192
Event Hall Outdoor Patio	2,500	100
Bridal Veil Room	375	15
Partial Dining Room	750	48
Partial Dining Room & Terrace	1,050	60
Poolside BBQ Area	2,250	200
Pool Deck	12,500	500+
Wapama Room	212	10
Carlton Room	212	10
Sunset Deck (informal outdoor space with a view)	750	30



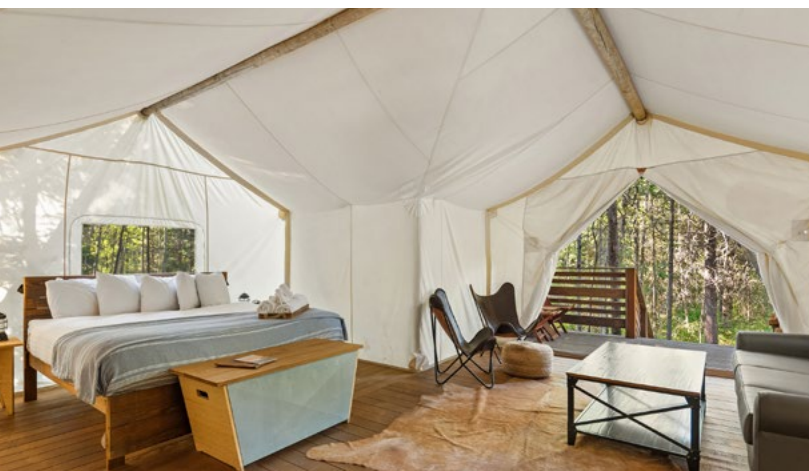
# UNDER CANVAS YOSEMITE

## GROVELAND

Located on 80 acres of serene mountainside forest, just 10 minutes from the west entrance of Yosemite National Park at Big Oak Flat, Under Canvas Yosemite—the brand's first California camp—offers easy access to one of the country's oldest and most beloved national parks.

Under Canvas Yosemite offers a variety of upscale, safari-inspired tents that blend rustic charm with modern comforts, creating a haven of relaxed luxury in nature. Each of the 71 spacious, light-filled tents is adorned with West Elm furnishings, plush king-size bed with luxe lines, in-tent heating, lantern, and USB battery packs. All tents are equipped with ensuite bathrooms with a pull-chain shower with hot water, sink, flush toilet, towels, and E.O. bath products.

Under Canvas Yosemite is ideal for small groups (30 people or less) or full property buyouts (groups up to 200 people). It's an ideal setting for weddings, retreats, corporate events, conferences, and more. Their shaded lounge areas, fire pits, and outdoor gathering spaces provide the perfect backdrop for genuine connection and collaboration, all set within the unmatched beauty of Yosemite.



## Meeting Spaces

### Private Fire Pit

Small groups

### Event Deck

Groups of all sizes

## Contact

(406) 404-1861

[groups@undercanvas.com](mailto:groups@undercanvas.com)

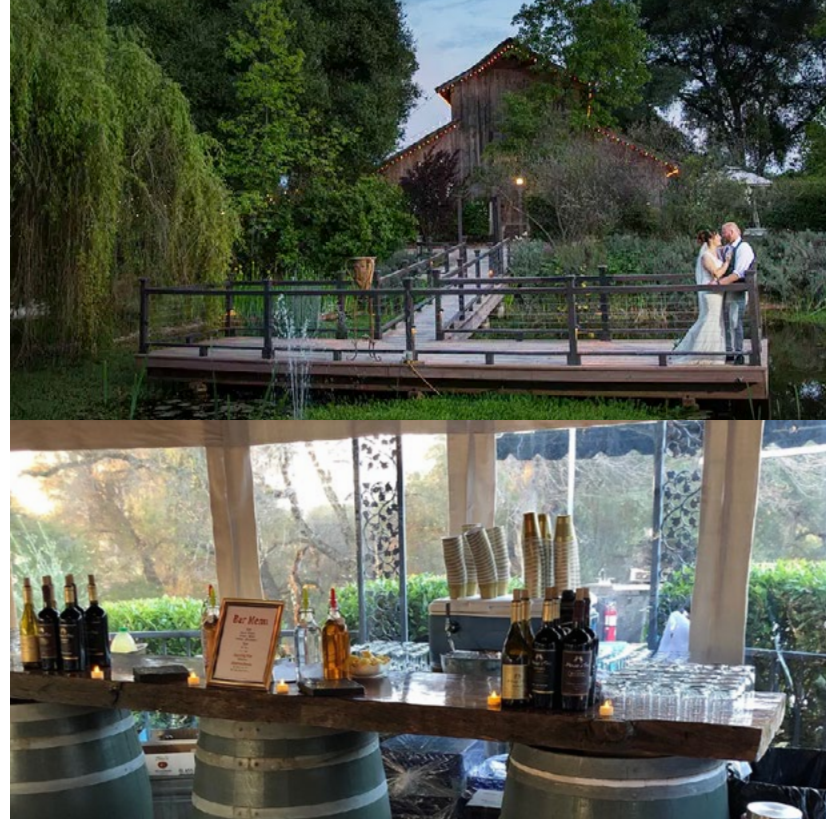
[undercanvas.com/camps/yosemite](https://undercanvas.com/camps/yosemite)



# UNION HILL INN

SONORA

An inviting and ideal rustic setting for gatherings of all sizes. Located in Sonora, the property offers four rooms in the main house plus three cottages to accommodate 37-40 overnight guests. Enjoy some team building time along the on-site trails made for walking, running and hiking. The grounds are everyone's favorite including the pavilions, gazebo, the foot bridge, various ponds, barns and the pool. Make sure to ask about "The Barn Stead" consisting of three party-friendly structures steeped in Gold Country history. Breakfast at the Inn includes homemade ingredients from the property's garden.



## Meeting Spaces

### Upper Terrace (outdoor)

20-50, depending on set up

### Lower Terrace (outdoor)

30-50, depending on set up

### Great Room

15-25, depending on set up

### Near Barn & Rusty Buckle Bar

25-50

### Chapel/Cabaret

40-80, depending on set up

### Upper Pavilion (two lighted outdoor areas)

400 total (200 each area)

### Grape Arbor and Deck

100 people in each area

### Union Hall

275

### Gazebo

25-40, depending on set up

### Grand Pavilion

50-180, depending on set up

### Entire Venue

175, contact venue for more details

## Contact

Barbara Stutzman, Owner

(209) 533-1494

eventkeeper@yahoo.com

[unionhillinn.com](http://unionhillinn.com)





UNIQUE

# *Event Facilities*



Indicates Visit Tuolumne County Partners



JAMESTOWN



# THE ARMORY

## SONORA

The Armory is a distinctive venue in Downtown Sonora with an event center that specializes in delivering exceptional events and elevated dining experiences. From wedding receptions to retirement parties, bridal showers to birthdays, they have a space for every occasion. Menus range from deliciously-balanced casual to upscale, innovative cuisine. Select your space, customize your menu and let their experienced, professional staff assist you in hosting a flawless event.



## Meeting Spaces

### Wine Room

30

### Sky Lounge

20

### Bourbon Barrel

52

### Rooftop Patio

40 (60 when combined with Sky Lounge)

### Kennedy Room

130

## Contact

Jenn Edwards, Managing Member

(209) 694-3158

[info@armorysonora.com](mailto:info@armorysonora.com)

[armorysonora.com](http://armorysonora.com)





# ARONOS RESEARCH CLUB

SONORA

The historic Aronos Research Club building in Downtown Sonora is a quaint, historic venue appropriate for meetings, receptions, small weddings, parties and dances. Having been built in 1902, it was originally a Baptist Church. The building has one large room with hardwood floors, a high ceiling and stage for performances. There is a small kitchen, and tables and chairs are available. Public parking is available in the city parking garage a block away.



## Meeting Spaces

**Interior Room**

50-80

## Contact

**Shelly Stewart**

**(209) 770-1144**

**[aronosresearchclub@yahoo.com](mailto:aronosresearchclub@yahoo.com)**



## COLUMBIA STATE HISTORIC PARK

For your next gathering, immerse your group in authentic California's Gold Rush history in Columbia State Historic Park. Spend free time strolling along wooden sidewalks, riding on an authentic stagecoach, panning for gold, and conversing with knowledgeable and friendly townspeople dressed in period attire. Restaurants, saloons, working blacksmith shop, old-fashioned bowling alley, theatre and shops provide the town's genuine ambiance. There are several meeting and gathering spaces throughout the park. The engaging experience doesn't end at the end of the day; two historic inns and three cabins allow your group of up to 68 guests to stay right in the heart of the working Gold Rush town.



Photo credits: Preethi Chandrasekhar



### Meeting Spaces



#### Fallon Rose Garden

50

#### Burns Cottage Garden

100

#### Gazebo

50

#### Mocine Barn Area

25

#### School House Grounds

25 vehicles (outside grounds only)

### Contact

All sites must be reserved through the State of California Special Event Process. Contact: Lisa Domser  
[lisa.domser@parks.ca.gov](mailto:lisa.domser@parks.ca.gov)  
[parks.ca.gov/columbia](https://parks.ca.gov/columbia)



## GIANELLI VINEYARDS WINERY AND TASTING ROOM

### JAMESTOWN

Located in Jamestown, Gianelli Vineyards & Winery not only stands as a testament to the past, but also as a wonderful example of the successful balance that can be achieved between old world traditions and modern-day innovation. As the winery and vineyards continue to thrive, the hope is to educate fellow vintners and the public about the wonderful, expressive character of Italian varietals grown here in the Sierra Foothills.

Specializing in weddings, the property offers breathtaking views of the Sierra Foothills, gorgeous sunsets and acres upon acres of established Italian grape vines. The Gianelli House overlooks Yosemite's peaks and takes in the beauty of Historic Jamestown. Smaller weddings can be held on the grassy area at the top of the hill, while larger groups may be accommodated in the middle of the vineyard at the Oak Tree Event Area with views of sunsets and vines. The happy couple can also opt to spend their first night together in the Bridal Suite atop the tasting room. Wake up to a glorious sunrise while enjoying a coffee on the private deck overlooking the entire vineyard.



### *Meeting Spaces*

#### **Vineyard Hilltop Venue**

75

#### **Oak Tree Event Area**

200

### *Contact*

**Amy Veldstra**

**(209) 241-6845**

**amyveldstra@yahoo.com**

**[gianellivineyards.com](http://gianellivineyards.com)**





## THE GRILL AT PINE MOUNTAIN LAKE

### GROVELAND

This 16,000 sq. ft. restaurant and lounge overlooks the Pine Mountain Lake Golf Course with majestic views of Yosemite's peaks. The spacious country club provides an unsurpassed setting for all kinds of special events such as business seminars, community luncheons, anniversary and birthday celebrations, bridal showers, rehearsal dinners, retirement parties and family reunions, just to name a few.

The outside deck is perfect for outdoor dining and cocktails. The clubhouse also provides free WiFi for members and customers, and meeting attendees will have the option to work from their laptops in between sessions. When you're not meeting, a round of golf makes the perfect team building event.



## Meeting Space

**Banquet Room**  
80

## Contact

**Events Manager**  
(209) 962-8638  
[cluboffice@pinemountainlake.com](mailto:cluboffice@pinemountainlake.com)  
[pinemountainlake.com/the-grill](https://pinemountainlake.com/the-grill)



# HURST RANCH

## JAMESTOWN

Hurst Ranch is an idyllic farm with everything you need for a relaxed and rustic meeting, wedding or other event. Several outdoor areas include a deck overlooking the vineyards, olive grove, and rolling hills and a pond-side terrace. The large barn provides a blank canvas for a customized indoor space.

As a family run ranch, the Hurst's know how important these moments and big days are. They do everything in their power to ensure that your wedding day or event is exactly as you want it!



## Meeting Spaces

### Barn

Up to 150

### Outdoor Area

300

## Contact

Emily Hurst, Event Manager

(209) 984-3016

[hurstranchjamestown.com](http://hurstranchjamestown.com)



# INDIGENY RESERVE

## SONORA

Nestled in the hills of Historic Sonora, the world-class tasting bar features hard cider, brandy and vodka. Organic apple orchards, shaded picnic areas and indoor function rooms offer a variety of space options.

Founded by the Watson Family in 2007, Indigeny Reserve is a lush 160-acre apple preserve created with one thing in mind: to create the best hard ciders and spirits with organic apples. The facility offers self-guided nature trails, outdoor games and tours by arrangement.



## Meeting Spaces



### Barrel Room

8 banquet

### Estate House

125

### Granny Smith Picnic Area

Up to 85 people, 14 picnic tables

### Honey Crisp Picnic Area

Up to 65 people, 12 picnic tables

### Large Lawn

500

### Medium Lawn

300

### Small Lawn

125

## Contact

Cassandra Hard

(209) 533-9463

[cassandrahard@indigenyreserve.com](mailto:cassandrahard@indigenyreserve.com)

[indigenyreserve.com](http://indigenyreserve.com)





# RAILTOWN 1897 STATE HISTORIC PARK

## JAMESTOWN

Located in Jamestown, Railtown 1897 State Historic Park is a year-round venue and home to an interpretive center, the Depot Store and a historic, working roundhouse of the Sierra Railway. This one-of-a-kind attraction combines industrial heritage and railroad history with the lore of Hollywood's film industry.

Known as "The Movie Railroad," Railtown 1897 and the historic locomotives and railroad cars preserved here have appeared in more than 200 films, television productions and commercials. Still a popular Hollywood location site, Railtown 1897 has been called "the most photographed railroad in the world."

Whether you have small groups looking for a unique train venue experience, the entire train for private train rides, or large groups up to 400 people, your event at this historic state park will be memorable. Groups are welcome to tour the historic roundhouse and museum containing many film props used over the years.



Photo credit: India Sutton



## Meeting Spaces

Location	Space	Capacity
Stationary	Carriage Room	45
	Picnic Area	500
	Caboose Stationary	20
Trains	Caboose	20
	599 Car	75
	Bar Car	50
	#14 and #12 Cars	82

## Contact

**Daniel Lewis**  
 (209) 984-3953  
[daniel.lewis@parks.ca.gov](mailto:daniel.lewis@parks.ca.gov)  
[railtown1897.org](http://railtown1897.org)



# SONORA OPERA HALL

## SONORA

The Opera Hall was built in 1885 and the City of Sonora acquired this "Jewel of the Mother Lode" in December of 1986. Located in Downtown Sonora, right in the heart of the central business district, its proximity to several hotels makes it the perfect location for a meeting or event.

The Historic Sonora Opera Hall has been beautifully restored and offers many unique features and amenities that give it character that you will not find in other facilities: elegant burgundy velvet draperies, coordinating carpet in entrance area and beautiful hardwood floors in the main area. The Hall is 72'7" x 52' with a stage area that is 16' x 34'. There's a large prep kitchen, sound system with microphones, accessible lift to the stage, nearby free parking and internet access.

Rentals are available and include 25 8' rectangular gray tables, five 6' rectangular gray tables, 205 gray chairs, a projection screen (no projector), and wooden podium with a microphone. Furniture for other set-ups is available locally.



## Meeting Space

### Opera Hall

Up to 170 banquet

## Contact

**Sonora Chamber of Commerce**

**209-694-4008**

**[info@sonorachamber.org](mailto:info@sonorachamber.org)**

**[sonoraoperahall.com](http://sonoraoperahall.com)**





# THE STANDARD POUR

## SONORA

The Standard Pour is a casual restaurant located on the outskirts of Sonora in the historic township of Standard and is housed in the old Pickering Lumber office building built in 1924. The venue provides a variety of options for private events. They can accommodate small or larger informal gatherings or corporate events. If you are looking for a fun, casual way to throw a party or private event, The Standard Pour can help, and can do everything from luncheons to appetizer bars, buffets and plated dinners.



## Meeting Spaces



### Conference Room

12

### President's Room

24

### Banquet Room

50

### Patio (seasonal)

32

### The Lawn (seasonal)

72

## Contact

### Event Manager

(209) 532-7687

[standardpour@gmail.com](mailto:standardpour@gmail.com)

[standard-pour.com](http://standard-pour.com)



# TELELI GOLF CLUB

## SONORA

Located in the historic Gold Rush town of Sonora, this scenic 18-hole championship course was designed by Robert Muir Graves and opened in 1990. In 2019 the Tuolumne Band of Me-Wuk Indians purchased the property as a resort amenity to the Black Oak Casino and for the community.

Teleli Golf Club provides a fully stocked golf shop, full restaurant, bar, driving range, putting greens and four sets of tees to accommodate golfers of all abilities. Teleli Golf Club provides an outstanding facility. From groups of 12 to full course use and banquets, they can arrange and personalize the facilities and menu to satisfy your event specifications and needs. Rental equipment is also available, and the team can assist in professional tournament preparations and golf event/outing planning.



## Meeting Spaces

### Clubhouse

Theater up to 100, banquet up to 75 and reception up to 120

### Outdoor Tented Area

Theater up to 130, banquet up to 100 and reception up to 150

## Contact

Food/Beverage and Banquets Manager

(209) 532-1000

[teleligolfclub.com](http://teleligolfclub.com)



# TUOLUMNE COUNTY MUSEUM

SONORA

What is now the Tuolumne County Museum in Downtown Sonora actually served as the county jail from its construction in 1865 until 1960. The shaded courtyard forged by red brick walls is a unique outdoor venue for meetings, weddings and other gatherings.



## *Meeting Spaces*

**Courtyard**  
100

## *Contact*

**Tuolumne County Parks & Recreation**  
(209) 533-5663  
[eatken@co.tuolumne.ca.us](mailto:eatken@co.tuolumne.ca.us)  
[tuolumnecounty.ca.gov/facilities/facility/  
details/museum-courtyard-15](https://tuolumnecounty.ca.gov/facilities/facility/details/museum-courtyard-15)



# COMMUNITY RESILIENCE CENTERS

## TUOLUMNE & GROVELAND

The Groveland and Tuolumne Community Resilience Centers are where inspiration meets functionality. Nestled in the heart of nature's bounty within small communities, these identical centers are the perfect venues, designed to cater to your every need while fostering a sense of unity and sustainability.

Equipped with state-of-the-art amenities and equipment, including kitchens, the centers feature spacious meeting rooms with large windows that offer panoramic views and plenty of natural light. The interiors are tastefully designed, creating an ambiance that is both professional and inviting. Whether you're planning a corporate meeting, a workshop, or a community event, the centers' versatile event spaces are suitable for gatherings of all sizes and can accommodate your unique requirements.



## Meeting Spaces

(both locations have identical interior spaces)

### Large Meeting Rooms

Half: 278 - Full: 556

### Classroom

50

## Contact

**Tuolumne County Parks & Recreation**

**(209) 533-5663**

**[eaiken@co.tuolumne.ca.us](mailto:eaiken@co.tuolumne.ca.us)**

**Groveland:**

**[tuolumnecounty.ca.gov/Facilities/Facility/Details/Groveland-Community-Resilience-Center-34](https://tuolumnecounty.ca.gov/Facilities/Facility/Details/Groveland-Community-Resilience-Center-34)**

**Tuolumne:**

**[tuolumnecounty.ca.gov/Facilities/Facility/Details/Tuolumne-Community-Resilience-Center-40](https://tuolumnecounty.ca.gov/Facilities/Facility/Details/Tuolumne-Community-Resilience-Center-40)**





## SERVICES

# *Always Ready to Help*



Go to **VisitTuolumne.com/groups-and-meetings** for more services.

★ Indicates Visit Tuolumne County Partners



# Floral

## WILDBUD CO

Located in the heart of Downtown Sonora, Wildbud specializes in modern floral design for weddings, events and daily orders. They also offer a variety of other choices such as fruit baskets, gourmet snack baskets and more.

Bring your group of 6 or more for a floral design workshop. All workshops are booked after shop hours, so the shop and the team's attention is all yours. Workshops are roughly 3 hours, and include time for cocktail hour and mingling before (not provided by Wildbud) and covers an introduction and education into the basics of floral and design.



## Meeting Spaces

In shop

## Contact

Cheyenne Radanovich or Ashley Moore  
(209) 288-2051  
[shop@wildbudco.com](mailto:shop@wildbudco.com)  
[www.wildbud.co](http://www.wildbud.co)

## SONORA FLORIST & BEAR'S GARDEN FLORIST

Two full-service local florists in Sonora, one downtown and the other in The Junction Shopping Center, do weddings and events with a large assortment of flowers and modern designs.



## Contact

(209) 532-9533  
[sonoraflorist@gmail.com](mailto:sonoraflorist@gmail.com)  
[sonoraflorist.com](http://sonoraflorist.com)



# Photography

## NATURAL UNIONS

Natural Unions specializes in photography for adventurers, whether you're getting married at a national park, winery, lodge, lake house, or deep in the wilderness. They help nature lovers create a soulful experience outdoors with bespoke photography that's as bold as your love. They offer packages for adventure elopements, intimate weddings, vow renewals, engagements, family sessions, maternity, and more.



## Contact

Kira Tucker  
(209) 417-9470  
kira@naturalunions.com  
naturalunions.com

## JENNIFER RAPOZA PHOTOGRAPHY

Photographer Jennifer Rapoza specializes in destination weddings, engagements, surprise proposals, elopements, family and high school senior photography. She enjoys casual, fun photo sessions tailored to the unique personality of each family, group and individual.



## Contact

Jennifer Rapoza  
(209) 613-4476  
jrapozaphoto@gmail.com  
jenniferrapoza.com



## JOLEEN WILLIS PHOTOGRAPHY

Joleen Willis is a wedding and elopement photographer based out of Tuolumne County, near Yosemite. Nothing gives her greater joy than documenting a part of your story among the grandeur of the Sierra Nevada. Her photography style is a mix of gentle direction in posed photographs combined with beautifully imperfect candid moments. Joleen can capture large weddings and events to small and adventurous events.



### Contact

Joleen Willis  
(209) 768-6016  
joleen@joleenwillis.com  
joleenwillis.com

## SABRINA JOVANNA PHOTOGRAPHY

Sabrina Jovanna is a Tuolumne County native who specializes in photographing people in various places throughout the County. Specializing in family and children's portraits but absolutely loves to photograph weddings as well! She believes the Mother Lode has endless locations to photograph and has the most beautiful expressions of the changing seasons.



### Contact

Sabrina Jovanna  
(209) 559-5804  
sabrina@sabrinajovanna.com  
sabrinajovanna.com



# Catering

## THE BRANCH

Whether it's for a wedding or office lunch, or anything in between, The Branch has an option for you. They offer private events at the restaurant, on-site catering and pick-up or drop-off options (based on availability and party size). The options are endless and they want to make this easy for you.

### Contact

(209) 586-1402

[hello@thebranchtwainharte.com](mailto:hello@thebranchtwainharte.com)

[thebranchtwainharte.com](http://thebranchtwainharte.com)

## PINOCCHIO'S

The Pinocchio's family recipes have been passed down through four generations and they are honored to share them with you. They specialize in homemade sauces, oven-baked sandwiches, fresh salads and hearty soups. Pinocchio's offers a variety of options for your event.

### Contact

(209) 533-1996

[info@pinocchiositalianrestaurant.com](mailto:info@pinocchiositalianrestaurant.com)

[pinocchiositalianrestaurant.com](http://pinocchiositalianrestaurant.com)



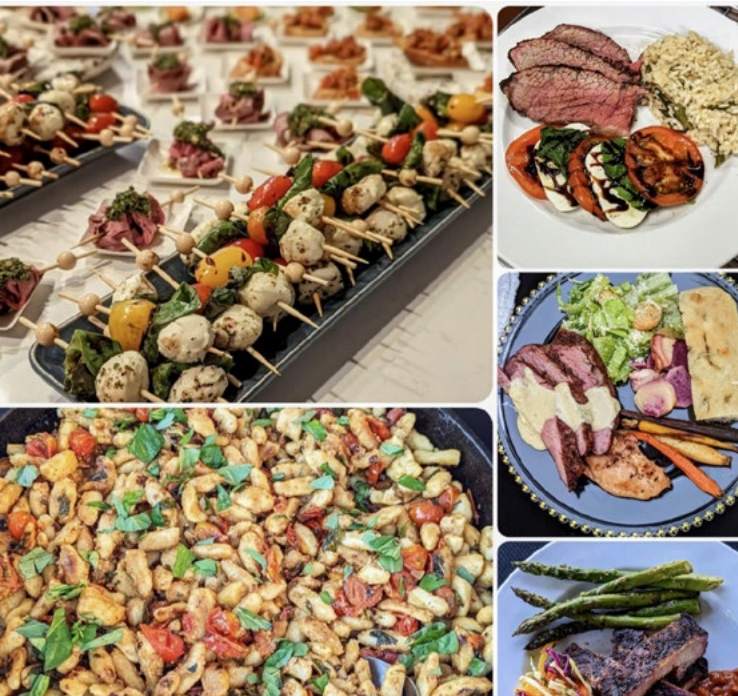


## CRUMB CATERING & CONFECTIONS

Crumb Catering & Confections offers a wide variety of dishes and desserts for all of your events. With their wood oven, smoker, barbecue, and passion for variety and ethnic cuisines, the opportunities are endless! Using fresh, local, and organic ingredients means the food is outstanding in taste and

### Contact

(209) 770-4506  
crumbcandc@gmail.com  
crumbcc.com



## DEVON'S DELECTABLES

Devon's Delectables offers all occasion catering, personal chef meal service, custom wedding and special occasion cakes, pastries and desserts. With over 30 years of professional experience, Devon's provides exceptional quality and customer service, dependability, along with the craftsmanship and attention to detail that you, your family and your guests will appreciate.

### Contact

Devon Woodruff  
(209) 324-0187  
devon@devonsdelectables.com





# Formal Wear

## THE BRIDAL VAULT

The Bridal Vault in Jamestown is an intimate bridal boutique providing the ultimate bridal experience. The one-stop-shop offers a wide selection of gowns to choose from along with bridal party attire, tuxedo rentals, wedding planning and coordinating services, alterations and a beautiful wedding day Bridal Suite available for the Bride and her bridesmaids.

### Contact

Kelsey East  
(209) 559-9039  
[thebridalvault@gmail.com](mailto:thebridalvault@gmail.com)  
[thebridalvault.com](http://thebridalvault.com)

## THE BRIDAL LOFT

The knowledgeable staff at The Bridal Loft in Downtown Sonora will help you find the dress of your dreams and wants your experience to be as enjoyable as possible, therefore only sees brides by appointment. Besides bridal gowns, they also provide bridesmaids dresses and tuxedo rentals.

### Contact

(209) 352-1114 or (209) 694-6923  
[thebridalloft55@gmail.com](mailto:thebridalloft55@gmail.com)  
[sonorabridalloft.com](http://sonorabridalloft.com)





# More Services

## AMALA DETOX & TEA LOUNGE

Be pampered at Amala Detox and Tea Lounge with ionic foot soaks, looseleaf teas, infrared sauna therapy, organic spray tanning, facials, massage therapy and more. They also host private parties.

### Contact

(209) 694-7241

[healthytribe@amaladetox.com](mailto:healthytribe@amaladetox.com)

[amaladetox.com](http://amaladetox.com)



## PREMIER EVENT RENTALS

From seating and dinnerware to dance floors and cotton candy machines, Premier Event Rentals has a wide selection of rentals to help make your vision for your next event come to life. They are committed to your event. Ask about delivery and set up options.

### Contact

(209) 694-3178

[premiereeventrentals@gmail.com](mailto:premiereeventrentals@gmail.com)

[eventrentals-premiere.com](http://eventrentals-premiere.com)





## TEAM BUILDING & ACTIVITIES

# *Dream, Do, Be in Tuolumne County*



PINECREST



## TEAM BUILDING & GUIDED TOURS

Tuolumne County's expert guide services deliver excellent group experiences in the outdoors. Each has its own specialties that can align with your needs. Whether it's solving a real-time immersive puzzle or going on an interpretive hike into the woods, a photography adventure, a fishing excursion, or a thrilling off-road ride you will get the results you're after.

**Motherlode Escape Rooms ★**  
**209-588-3861**  
[motherlodeescaperooms.com](http://motherlodeescaperooms.com)

**Echo Adventure Cooperative ★**  
**(209) 732-5161**  
[echocoop.com](http://echocoop.com)

**Lasting Adventures ★**  
**(800) 513-8651**  
[lastingadventures.com](http://lastingadventures.com)

**Miller's Off-Road Adventures ★**  
**(209) 431-9153**  
[millersoffroadadventures.com](http://millersoffroadadventures.com)

**Wild Yosemite ★**  
**(209) 801-2015**  
[wildyosemite.com](http://wildyosemite.com)

**YExplore Yosemite Adventures**  
**(209) 532-7014**  
[yexplore.com](http://yexplore.com)



## WHITE WATER RAFTING

Whitewater rafting with one of several renowned outfitters on the Wild and Scenic Tuolumne River is an adventure like no other. The Tuolumne River is California's premier wilderness whitewater, and each expert and reputable guide service provides a unique specialty to your group's river experience.

**ARTA River Trips ★**  
**(209) 962-7873**  
[arta.org](http://arta.org)

**Sierra Mac River Trips ★**  
**(209) 591-8027**  
[sierramac.com](http://sierramac.com)

**Zephyr River Expeditions ★**  
**(209) 532-6249**  
[zrafting.com](http://zrafting.com)

**OARS ★**  
**(209) 736-4677**  
[oars.com](http://oars.com)

**All Outdoors California  
Whitewater Rafting ★**  
**(925) 932-8993**  
[aorafting.com](http://aorafting.com)





## HORSEBACK RIDING

Take your group to see the Sierra the way the settlers first saw it--on horseback! From a leisurely half-hour ride to an adventuresome week-long pack trip into the Emigrant Wilderness, you'll see the best of the mountains from the best seat in the house — your saddle.

### **Aspen Meadow Pack Station ★**

**(209) 965-3402**

**[aspenmeadowpackstation.com](http://aspenmeadowpackstation.com)**

### **Kennedy Meadows Pack Station ★**

**(209) 965-3900**

**[kennedymeadows.com](http://kennedymeadows.com)**

### **Pine Mountain Lake Equestrian Center ★**

**(209) 962-8667**

**[pinemountainlake.com/equestrian](http://pinemountainlake.com/equestrian)**



## OTHER ACTIVITIES

### **Dodge Ridge Mountain Resort ★**

(Skiing in winter; mountain biking and disc golf in summer/fall)

**(209) 965-3474**

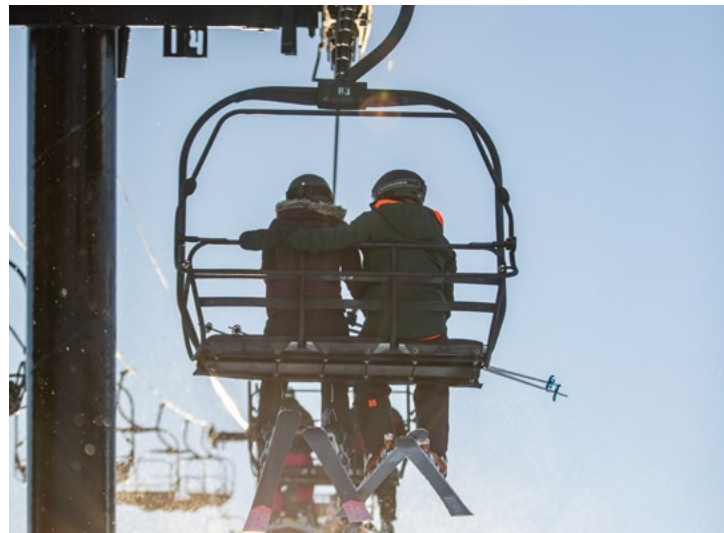
**[dodgeridge.com](http://dodgeridge.com)**

### **Fun Fine Artist**

(Painting parties)

**(209) 984-6077**

**[funfineartist.com](http://funfineartist.com)**







visit  
**TUOLUMNE**  
county  
YOSEMITE • GOLD COUNTRY • HIGH SIERRA

Visit Tuolumne County • 193 S Washington St. Sonora, California 95370 • (800) 446-1333 • [VisitTuolumne.com](https://www.visittuolumne.com)



West Side Trail, Tuolumne  
Photo: Local Freshies® / High Sierra Visitors Council

The 2025 Tuolumne County Meeting Planner is copyright ©2024 by Visit Tuolumne County, which has made every effort to ensure the accuracy of the information contained herein, but assumes no responsibility for errors, changes or omissions.